



Burgerhulpverleners vs inwoners in 2021

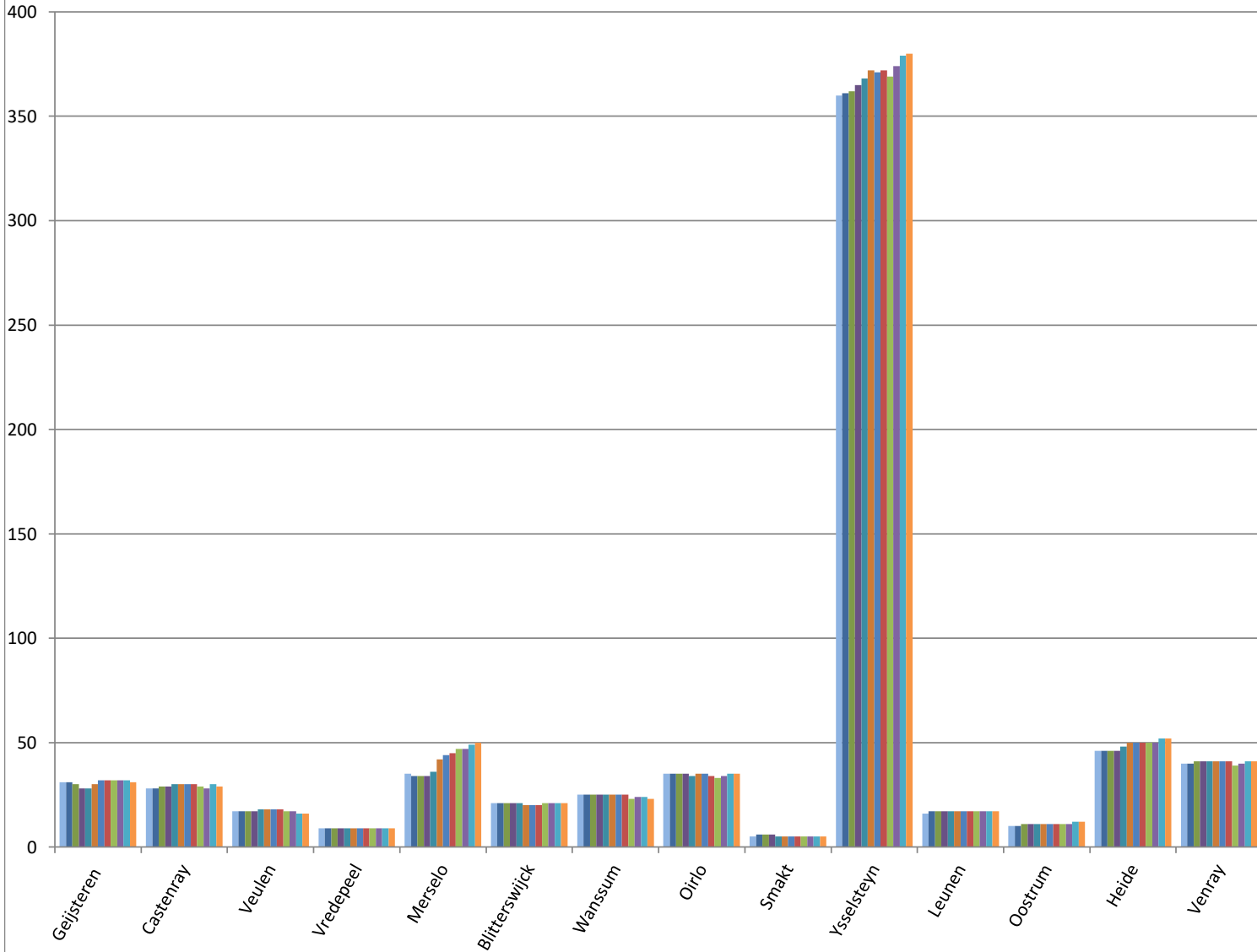
gestegen
gelijk gebleven
gedaald

(Per 1-1-2021)	inwoners	jan-21		feb-21		mrt-21		apr-21		mei-21		jun-21		jul-21		aug-21		sep-21		okt-21		nov-21		dec-21	
Totaal	43.565	678	1,56%	680	1,56%	683	1,57%	684	1,57%	691	1,59%	705	1,62%	708	1,63%	709	1,63%	702	1,61%	709	1,63%	722	1,66%	721	1,65%
Blitterswijk	1.135	31	2,73%	31	2,73%	30	2,64%	28	2,47%	28	2,47%	30	2,64%	32	2,82%	32	2,82%	32	2,82%	32	2,82%	32	2,82%	31	2,73%
Castenray	815	28	3,44%	28	3,44%	29	3,56%	29	3,56%	30	3,68%	30	3,68%	30	3,68%	30	3,68%	29	3,56%	28	3,44%	30	3,68%	29	3,56%
Geijsteren	420	17	4,05%	17	4,05%	17	4,05%	17	4,05%	18	4,29%	18	4,29%	18	4,29%	18	4,29%	17	4,05%	17	4,05%	16	3,81%	16	3,81%
Heide	480	9	1,88%	9	1,88%	9	1,88%	9	1,88%	9	1,88%	9	1,88%	9	1,88%	9	1,88%	9	1,88%	9	1,88%	9	1,88%	9	1,88%
Leunen	2.285	35	1,53%	34	1,49%	34	1,49%	34	1,49%	36	1,58%	42	1,84%	44	1,93%	45	1,97%	47	2,06%	47	2,06%	49	2,14%	50	2,19%
Merselo	1.070	21	1,96%	21	1,96%	21	1,96%	21	1,96%	21	1,96%	20	1,87%	20	1,87%	20	1,87%	21	1,96%	21	1,96%	21	1,96%	21	1,96%
Oirlo	1.180	25	2,12%	25	2,12%	25	2,12%	25	2,12%	25	2,12%	25	2,12%	25	2,12%	25	2,12%	23	1,95%	24	2,03%	24	2,03%	23	1,95%
Oostrum	2.410	35	1,45%	35	1,45%	35	1,45%	35	1,45%	34	1,41%	35	1,45%	35	1,45%	34	1,41%	33	1,37%	34	1,41%	35	1,45%	35	1,45%
Smakt	210	5	2,38%	6	2,86%	6	2,86%	6	2,86%	5	2,38%	5	2,38%	5	2,38%	5	2,38%	5	2,38%	5	2,38%	5	2,38%	5	2,38%
Venray	28.640	360	1,26%	361	1,26%	362	1,26%	365	1,27%	368	1,28%	372	1,30%	371	1,30%	372	1,30%	369	1,29%	374	1,31%	379	1,32%	380	1,33%
Veulen	555	16	2,88%	17	3,06%	17	3,06%	17	3,06%	17	3,06%	17	3,06%	17	3,06%	17	3,06%	17	3,06%	17	3,06%	17	3,06%	17	3,06%
Vredepeel	235	10	4,26%	10	4,26%	11	4,68%	11	4,68%	11	4,68%	11	4,68%	11	4,68%	11	4,68%	11	4,68%	11	4,68%	12	5,11%	12	5,11%
Wanssum	1.890	46	2,43%	46	2,43%	46	2,43%	46	2,43%	48	2,54%	50	2,65%	50	2,65%	50	2,65%	50	2,65%	50	2,65%	52	2,75%	52	2,75%
Ysselsteyn	2.240	40	1,79%	40	1,79%	41	1,83%	41	1,83%	41	1,83%	41	1,83%	41	1,83%	41	1,83%	39	1,74%	40	1,79%	41	1,83%	41	1,83%

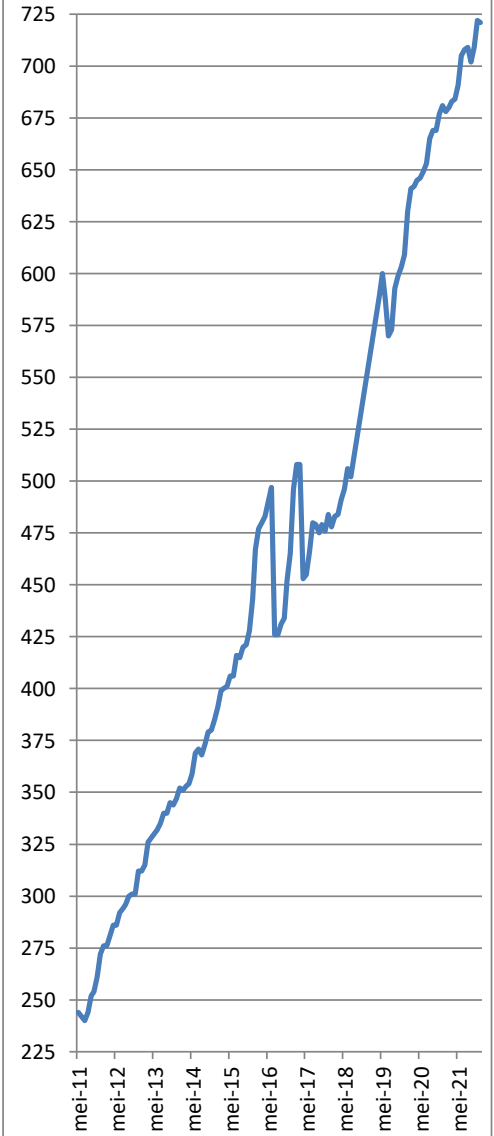
Wijken in Venray	inwoners	jan-21		feb-21		mrt-21		apr-21		mei-21		jun-21		jul-21		aug-21		sep-21		okt-21		nov-21		dec-21	
Antoniusveld	1.835	28	1,53%	29	1,58%	29	1,58%	28	1,53%	28	1,53%	28	1,53%	28	1,53%	27	1,47%	28	1,53%	28	1,53%	28	1,53%	26	1,42%
Brabander	2.240	42	1,88%	42	1,88%	42	1,88%	43	1,92%	45	2,01%	46	2,05%	46	2,05%	46	2,05%	46	2,05%	49	2,19%	50	2,23%	49	2,19%
Brukske	4.840	36	0,74%	36	0,74%	36	0,74%	38	0,79%	38	0,79%	39	0,81%	39	0,81%	39	0,81%	40	0,83%	41	0,85%	43	0,89%	45	0,93%
Centrum	2.150	24	1,12%	24	1,12%	25	1,16%	25	1,16%	25	1,16%	25	1,16%	26	1,21%	28	1,30%	28	1,30%	28	1,30%	28	1,30%	27	1,26%
Landweert	6.170	93	1,51%	93	1,51%	93	1,51%	93	1,51%	93	1,51%	93	1,51%	91	1,47%	90	1,46%	91	1,47%	92	1,49%	93	1,51%	92	1,49%
Oost	2.485	36	1,45%	36	1,45%	36	1,45%	36	1,45%	35	1,41%	36	1,45%	37	1,49%	37	1,49%	37	1,49%	35	1,41%	35	1,41%	36	1,45%
Smakterheide	830	12	1,45%	12	1,45%	12	1,45%	12	1,45%	12	1,45%	12	1,45%	12	1,45%	12	1,45%	10	1,20%	12	1,45%	12	1,45%	12	1,45%
Veltum	3.770	46	1,22%	45	1,19%	45	1,19%	45	1,19%	45	1,19%	45	1,19%	44	1,17%	44	1,17%	42	1,11%	42	1,11%	43	1,14%	44	1,17%
Vlakwater	835	12	1,44%	13	1,56%	13	1,56%	14	1,68%	16	1,92%	17	2,04%	17	2,04%	17	2,04%	17	2,04%	17	2,04%	17	2,04%	18	2,16%
West	3.485	31	0,89%	31	0,89%	31	0,89%	31	0,89%	31	0,89%	31	0,89%	31	0,89%	31	0,89%	32	0,92%	30	0,86%	30	0,86%	31	0,89%

Burgerhulpverleners in 2021

- jan-21 feb-21 mrt-21 apr-21
- mei-21 jun-21 jul-21 aug-21
- sep-21 okt-21 nov-21 dec-21

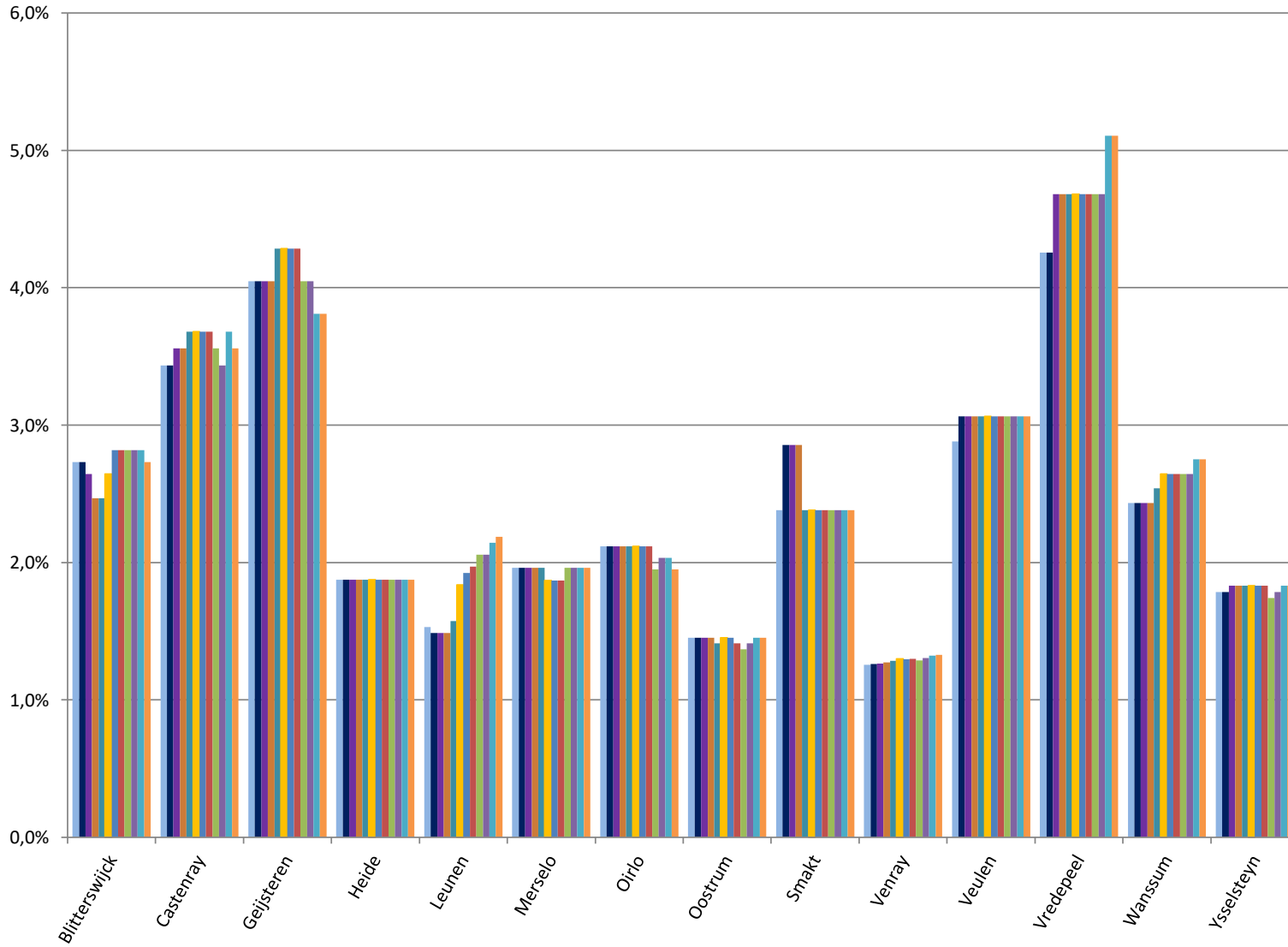


Burgerhulpverleners in de Gemeente Venray

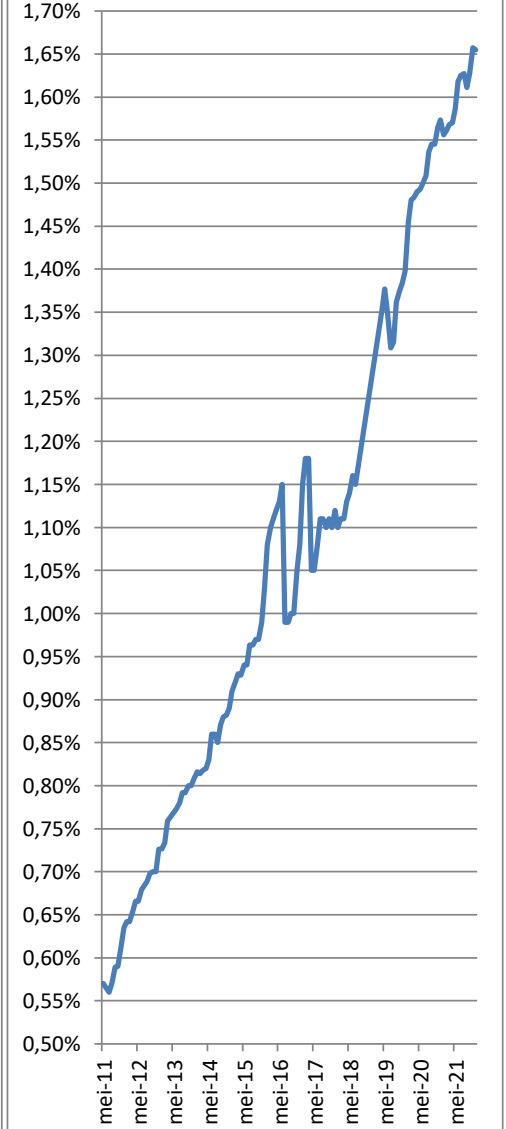


Burgerhulpverleners vs inwoners in 2021

- jan-21 feb-21 mrt-21 apr-21
- mei-21 jun-21 jul-21 aug-21
- sep-21 okt-21 nov-21 dec-21



Burgerhulpverleners vs inwoners in de Gemeente Venray





Benodigde burgerhulpverleners

Target = 2%

(Per 1-1-2019)

	inwoners	jan-21		feb-21		mrt-21		apr-21		mei-21		jun-21		jul-21		aug-21		sep-21		okt-21		nov-21		dec-21	
		Aantal	Totaal	Aantal	Totaal	Aantal	Totaal	Aantal	Totaal	Aantal	Totaal	Aantal	Totaal	Aantal	Totaal	Aantal	Totaal	Aantal	Totaal	Aantal	Totaal	Aantal	Totaal	Aantal	Totaal
Totaal	43.285	188	1,57%	186	1,57%	183	1,58%	182	1,58%	175	1,60%	161	1,63%	158	1,64%	157	1,64%	164	1,62%	157	1,64%	144	1,67%	145	1,67%
Blitterswijk	1.060	0	2,92%	0	2,92%	0	2,83%	0	2,64%	0	2,64%	0	2,83%	0	3,02%	0	3,02%	0	3,02%	0	3,02%	0	3,02%	0	2,92%
Castenray	815	0	3,44%	0	3,44%	0	3,56%	0	3,56%	0	3,68%	0	3,68%	0	3,68%	0	3,68%	0	3,56%	0	3,44%	0	3,68%	0	3,56%
Geijsteren	410	0	4,15%	0	4,15%	0	4,15%	0	4,15%	0	4,39%	0	4,39%	0	4,39%	0	4,39%	0	4,15%	0	4,15%	0	3,90%	0	3,90%
Heide	480	1	1,88%	1	1,88%	1	1,88%	1	1,88%	1	1,88%	1	1,88%	1	1,88%	1	1,88%	1	1,88%	1	1,88%	1	1,88%	1	1,88%
Leunen	2.275	11	1,54%	12	1,49%	12	1,49%	12	1,49%	10	1,58%	4	1,85%	2	1,93%	1	1,98%	0	2,07%	0	2,07%	0	2,15%	0	2,20%
Merselo	1.065	0	1,97%	0	1,97%	0	1,97%	0	1,97%	0	1,97%	1	1,88%	1	1,88%	1	1,88%	0	1,97%	0	1,97%	0	1,97%	0	1,97%
Oirlo	1.185	0	2,11%	0	2,11%	0	2,11%	0	2,11%	0	2,11%	0	2,11%	0	2,11%	0	2,11%	1	1,94%	0	2,03%	0	2,03%	1	1,94%
Oostrum	2.340	12	1,50%	12	1,50%	12	1,50%	12	1,50%	13	1,45%	12	1,50%	12	1,50%	13	1,45%	14	1,41%	13	1,45%	12	1,50%	12	1,50%
Smakt	215	0	2,33%	0	2,79%	0	2,79%	0	2,79%	0	2,33%	0	2,33%	0	2,33%	0	2,33%	0	2,33%	0	2,33%	0	2,33%	0	2,33%
Venray	28.535	211	1,26%	210	1,27%	209	1,27%	206	1,28%	203	1,29%	199	1,30%	200	1,30%	199	1,30%	202	1,29%	197	1,31%	192	1,33%	191	1,33%
Veulen	550	0	2,91%	0	3,09%	0	3,09%	0	3,09%	0	3,09%	0	3,09%	0	3,09%	0	3,09%	0	3,09%	0	3,09%	0	3,09%	0	3,09%
Vredepeel	230	0	4,35%	0	4,35%	0	4,78%	0	4,78%	0	4,78%	0	4,78%	0	4,78%	0	4,78%	0	4,78%	0	4,78%	0	5,22%	0	5,22%
Wanssum	1.885	0	2,44%	0	2,44%	0	2,44%	0	2,44%	0	2,55%	0	2,65%	0	2,65%	0	2,65%	0	2,65%	0	2,65%	0	2,76%	0	2,76%
Ysselsteyn	2.240	5	1,79%	5	1,79%	4	1,83%	4	1,83%	4	1,83%	4	1,83%	4	1,83%	4	1,83%	6	1,74%	5	1,79%	4	1,83%	4	1,83%

Wijken in Venray	inwoners	jan-21		feb-21		mrt-21		apr-21		mei-21		jun-21		jul-21		aug-21		sep-21		okt-21		nov-21		dec-21	
Antoniusveld	1.830	9	1,53%	8	1,58%	8	1,58%	9	1,53%	9	1,53%	9	1,53%	9	1,53%	10	1,48%	9	1,53%	9	1,53%	9	1,53%	11	1,42%
Brabander	2.085	0	2,01%	0	2,01%	0	2,01%	0	2,06%	0	2,16%	0	2,21%	0	2,21%	0	2,21%	0	2,21%	0	2,35%	0	2,40%	0	2,35%
Brukske	4.870	61	0,74%	61	0,74%	61	0,74%	59	0,78%	59	0,78%	58	0,80%	58	0,80%	58	0,80%	57	0,82%	56	0,84%	54	0,88%	52	0,92%
Centrum	2.185	20	1,10%	20	1,10%	19	1,14%	19	1,14%	19	1,14%	19	1,14%	18	1,19%	16	1,28%	16	1,28%	16	1,28%	16	1,28%	17	1,24%
Landweert	6.250	32	1,49%	32	1,49%	32	1,49%	32	1,49%	32	1,49%	32	1,49%	34	1,46%	35	1,44%	34	1,46%	33	1,47%	32	1,49%	33	1,47%
Oost	2.355	11	1,53%	11	1,53%	11	1,53%	11	1,53%	12	1,49%	11	1,53%	10	1,57%	10	1,57%	10	1,57%	12	1,49%	12	1,49%	11	1,53%
Smakterheide	820	4	1,46%	4	1,46%	4	1,46%	4	1,46%	4	1,46%	4	1,46%	4	1,46%	4	1,46%	6	1,22%	4	1,46%	4	1,46%	4	1,46%
Veltum	3.855	31	1,19%	32	1,17%	32	1,17%	32	1,17%	32	1,17%	32	1,17%	33	1,14%	33	1,14%	35	1,09%	35	1,09%	34	1,12%	33	1,14%
Vlakwater	840	5	1,43%	4	1,55%	4	1,55%	3	1,67%	1	1,90%	0	2,02%	0	2,02%	0	2,02%	0	2,02%	0	2,02%	0	2,02%	0	2,14%
West	3.445	38	0,90%	38	0,90%	38	0,90%	38	0,90%	38	0,90%	38	0,90%	38	0,90%	37	0,93%	39	0,87%	39	0,87%	39	0,87%	38	0,90%