



Burgerhulpverleners vs inwoners in 2022

gestegen

gelijk gebleven

gedaald

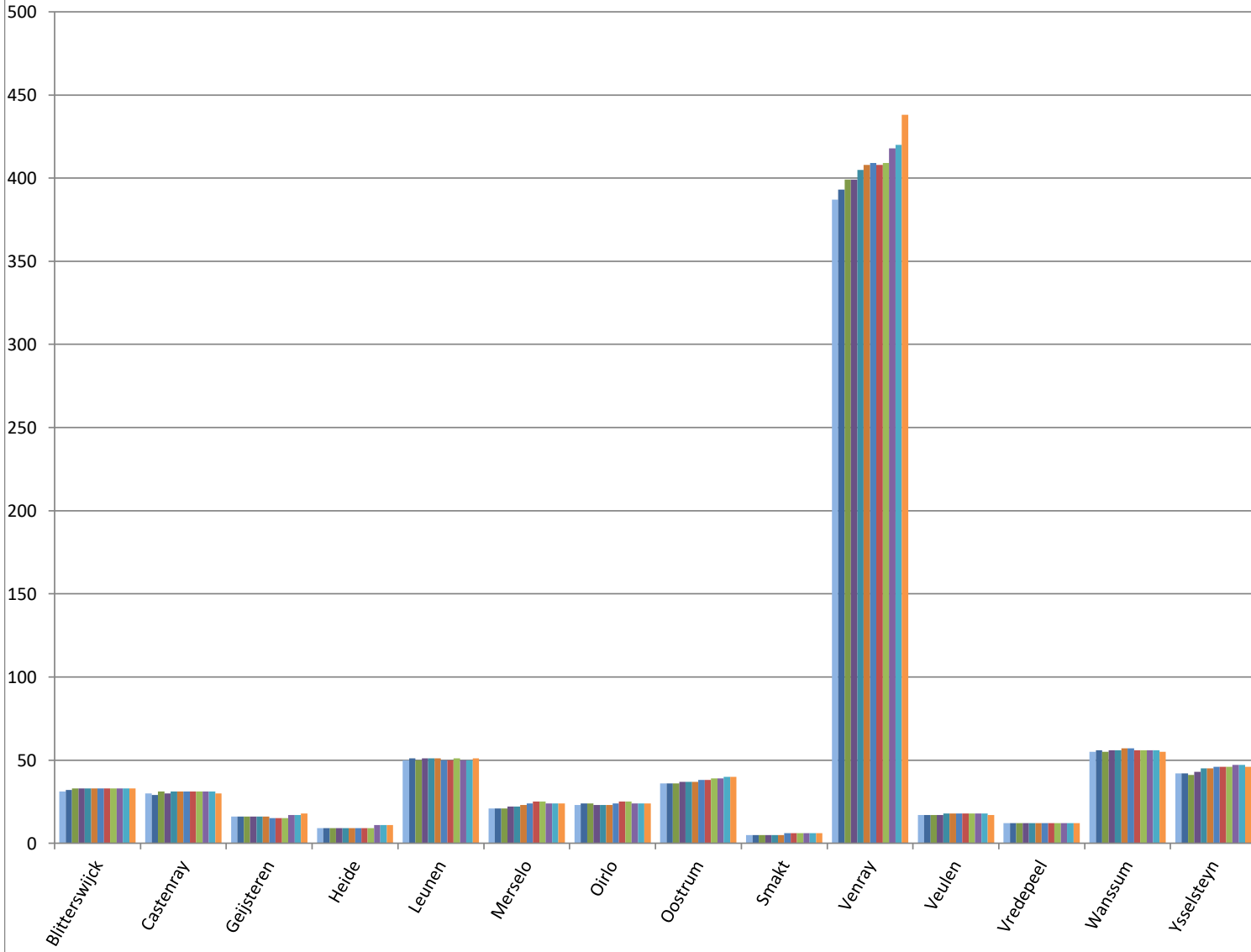
(Per 22-12-2021)

	inwoners	jan-22		feb-22		mrt-22		apr-22		mei-22		jun-22		jul-22		aug-22		sep-22		okt-22		nov-22		dec-22	
Totaal	43.670	734	1,68%	743	1,70%	749	1,72%	753	1,72%	763	1,75%	768	1,76%	772	1,77%	772	1,77%	775	1,77%	786	1,80%	789	1,81%	805	1,84%
Blitterswijck	1.145	31	2,71%	32	2,79%	33	2,88%	33	2,88%	33	2,88%	33	2,88%	33	2,88%	33	2,88%	33	2,88%	33	2,88%	33	2,88%	33	2,88%
Castenray	835	30	3,59%	29	3,47%	31	3,71%	30	3,59%	31	3,71%	31	3,71%	31	3,71%	31	3,71%	31	3,71%	31	3,71%	31	3,71%	30	3,59%
Geijsteren	410	16	3,90%	16	3,90%	16	3,90%	16	3,90%	16	3,90%	16	3,90%	15	3,66%	15	3,66%	15	3,66%	17	4,15%	17	4,15%	18	4,39%
Heide	495	9	1,82%	9	1,82%	9	1,82%	9	1,82%	9	1,82%	9	1,82%	9	1,82%	9	1,82%	9	1,82%	11	2,22%	11	2,22%	11	2,22%
Leunen	2.265	50	2,21%	51	2,25%	50	2,21%	51	2,25%	51	2,25%	51	2,25%	50	2,21%	50	2,21%	51	2,25%	50	2,21%	50	2,21%	51	2,25%
Merselo	1.075	21	1,95%	21	1,95%	21	1,95%	22	2,05%	22	2,05%	23	2,14%	24	2,23%	25	2,33%	25	2,33%	24	2,23%	24	2,23%	24	2,23%
Oirlo	1.185	23	1,94%	24	2,03%	24	2,03%	23	1,94%	23	1,94%	23	1,94%	24	2,03%	25	2,11%	25	2,11%	24	2,03%	24	2,03%	24	2,03%
Oostrum	2.420	36	1,49%	36	1,49%	36	1,49%	37	1,53%	37	1,53%	37	1,53%	38	1,57%	38	1,57%	39	1,61%	39	1,61%	40	1,65%	40	1,65%
Smakt	200	5	2,50%	5	2,50%	5	2,50%	5	2,50%	5	2,50%	5	2,50%	5	2,50%	6	3,00%	6	3,00%	6	3,00%	6	3,00%	6	3,00%
Venray	28.700	387	1,35%	393	1,37%	399	1,39%	399	1,39%	405	1,41%	408	1,42%	409	1,43%	408	1,42%	409	1,43%	418	1,46%	420	1,46%	438	1,53%
Veulen	555	17	3,06%	17	3,06%	17	3,06%	17	3,06%	18	3,24%	18	3,24%	18	3,24%	18	3,24%	18	3,24%	18	3,24%	18	3,24%	17	3,06%
Vredepeel	230	12	5,22%	12	5,22%	12	5,22%	12	5,22%	12	5,22%	12	5,22%	12	5,22%	12	5,22%	12	5,22%	12	5,22%	12	5,22%	12	5,22%
Wanssum	1.875	55	2,93%	56	2,99%	55	2,93%	56	2,99%	56	2,99%	57	3,04%	57	3,04%	56	2,99%	56	2,99%	56	2,99%	56	2,99%	55	2,93%
Ysselsteyn	2.280	42	1,84%	42	1,84%	41	1,80%	43	1,89%	45	1,97%	45	1,97%	46	2,02%	46	2,02%	46	2,02%	47	2,06%	47	2,06%	46	2,02%

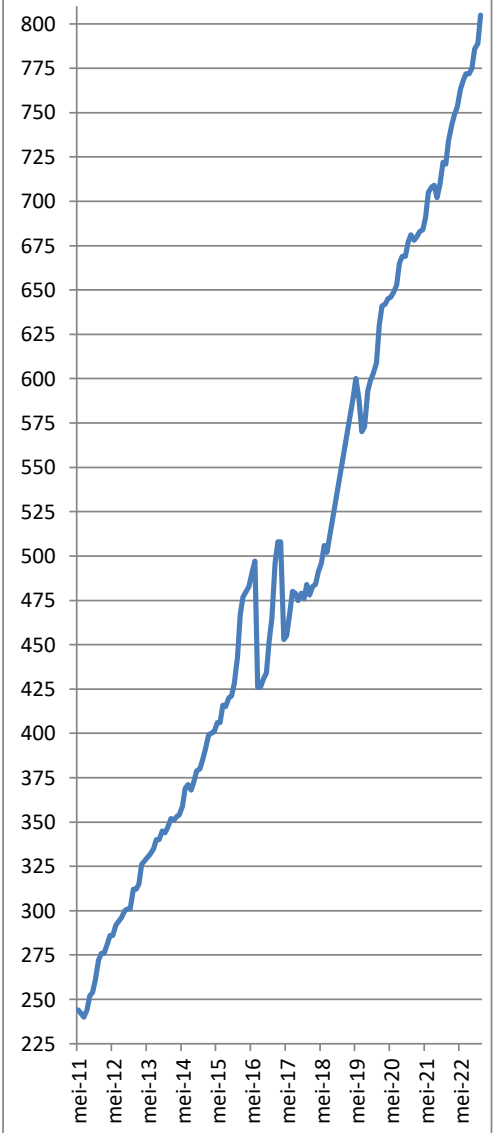
Wijken in Venray	inwoners	jan-22		feb-22		mrt-22		apr-22		mei-22		jun-22		jul-22		aug-22		sep-22		okt-22		nov-22		dec-22	
Antoniusveld	1.850	28	1,51%	28	1,51%	28	1,51%	28	1,51%	28	1,51%	29	1,57%	29	1,57%	29	1,57%	29	1,57%	30	1,62%	30	1,62%	31	1,68%
Brabander	2.345	48	2,05%	51	2,17%	51	2,17%	52	2,22%	53	2,26%	53	2,26%	54	2,30%	54	2,30%	54	2,30%	56	2,39%	55	2,35%	56	2,39%
Brukske	4.855	44	0,91%	43	0,89%	44	0,91%	44	0,91%	45	0,93%	45	0,93%	45	0,93%	46	0,95%	47	0,97%	49	1,01%	49	1,01%	50	1,03%
Centrum	2.205	28	1,27%	28	1,27%	28	1,27%	28	1,27%	28	1,27%	28	1,27%	28	1,27%	27	1,22%	27	1,22%	28	1,27%	29	1,32%	31	1,41%
Landweert	6.105	95	1,56%	98	1,61%	101	1,65%	99	1,62%	101	1,65%	104	1,70%	104	1,70%	104	1,70%	103	1,69%	106	1,74%	107	1,75%	111	1,82%
Oost	2.490	35	1,41%	36	1,45%	36	1,45%	36	1,45%	35	1,41%	35	1,41%	35	1,41%	34	1,37%	35	1,41%	36	1,45%	36	1,45%	36	1,45%
Smakterheide	815	12	1,47%	12	1,47%	12	1,47%	12	1,47%	12	1,47%	12	1,47%	12	1,47%	12	1,47%	12	1,47%	12	1,47%	12	1,47%	13	1,60%
Veltum	3.745	46	1,23%	47	1,26%	48	1,28%	49	1,31%	51	1,36%	49	1,31%	49	1,31%	49	1,31%	49	1,31%	47	1,26%	47	1,26%	52	1,39%
Vlakwater	860	19	2,21%	19	2,21%	19	2,21%	19	2,21%	19	2,21%	20	2,33%	20	2,33%	20	2,33%	21	2,44%	21	2,44%	21	2,44%	21	2,44%
West	3.430	32	0,93%	31	0,90%	32	0,93%	32	0,93%	33	0,96%	33	0,96%	33	0,96%	33	0,96%	32	0,93%	33	0,96%	34	0,99%	37	1,08%

Burgerhulpverleners in 2022

■ jan-22 ■ feb-22 ■ mrt-22 ■ apr-22
■ mei-22 ■ jun-22 ■ jul-22 ■ aug-22
■ sep-22 ■ okt-22 ■ nov-22 ■ dec-22

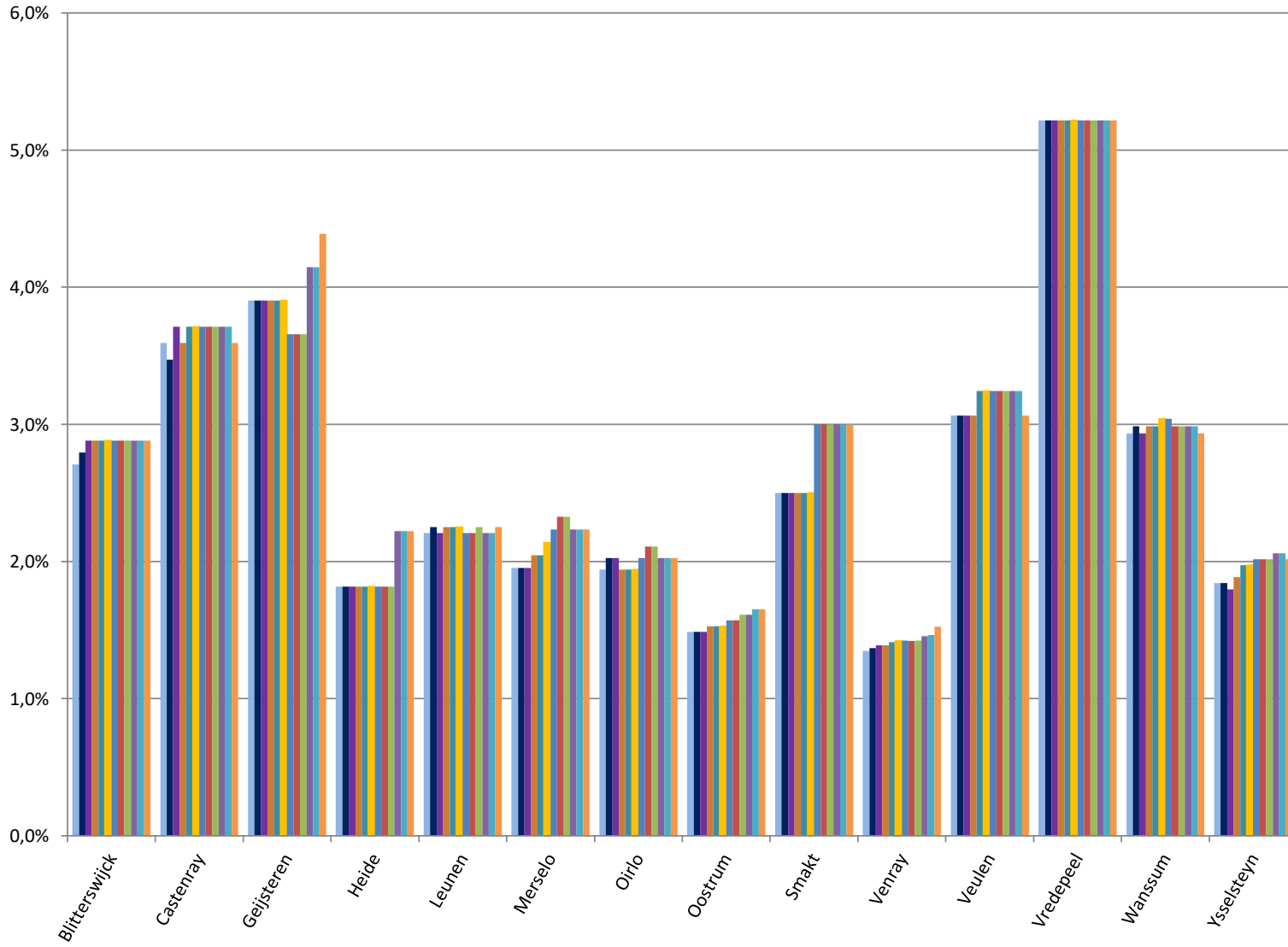


Burgerhulpverleners in de Gemeente Venray

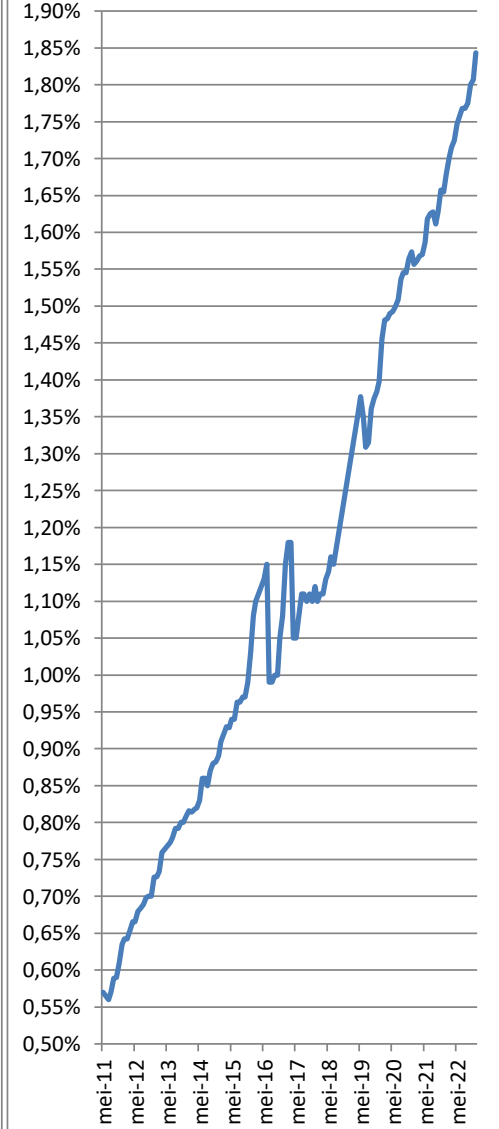


Burgerhulpverleners vs inwoners in 2022

- jan-22
- feb-22
- mrt-22
- apr-22
- mei-22
- jun-22
- jul-22
- aug-22
- sep-22
- okt-22
- nov-22
- dec-22



Burgerhulpverleners vs inwoners in de Gemeente Venray





Benodigde burgerhulpverleners

Target = 2%

(Per 1-1-2019)

	inwoners	jan-22		feb-22		mrt-22		apr-22		mei-22		jun-22		jul-22		aug-22		sep-22		okt-22		nov-22		dec-22	
		Aantal	Totaal	Aantal	Totaal	Aantal	Totaal	Aantal	Totaal	Aantal	Totaal	Aantal	Totaal	Aantal	Totaal	Aantal	Totaal	Aantal	Totaal	Aantal	Totaal	Aantal	Totaal	Aantal	Totaal
Totaal	43.670	139	1,68%	130	1,70%	124	1,72%	120	1,72%	110	1,75%	105	1,76%	101	1,77%	101	1,77%	98	1,77%	87	1,80%	84	1,81%	68	1,84%
Blitterswijk	1.145	0	2,71%	0	2,79%	0	2,88%	0	2,88%	0	2,88%	0	2,88%	0	2,88%	33	2,88%	0	2,88%	0	2,88%	0	2,88%	0	2,88%
Castenray	835	0	3,59%	0	3,47%	0	3,71%	0	3,59%	0	3,71%	0	3,71%	0	3,71%	31	3,71%	0	3,71%	0	3,71%	0	3,71%	0	3,59%
Geijsteren	410	0	3,90%	0	3,90%	0	3,90%	0	3,90%	0	3,90%	0	3,90%	0	3,66%	15	3,66%	0	3,66%	0	4,15%	0	4,15%	0	4,39%
Heide	495	1	1,82%	1	1,82%	1	1,82%	1	1,82%	1	1,82%	1	1,82%	1	1,82%	9	1,82%	1	1,82%	0	2,22%	0	2,22%	0	2,22%
Leunen	2.265	0	2,21%	0	2,25%	0	2,21%	0	2,25%	0	2,25%	0	2,25%	0	2,21%	50	2,21%	0	2,25%	0	2,21%	0	2,21%	0	2,25%
Merselo	1.075	1	1,95%	1	1,95%	1	1,95%	0	2,05%	0	2,05%	0	2,14%	0	2,23%	25	2,33%	0	2,33%	0	2,23%	0	2,23%	0	2,23%
Oirlo	1.185	1	1,94%	0	2,03%	0	2,03%	1	1,94%	1	1,94%	1	1,94%	0	2,03%	25	2,11%	0	2,11%	0	2,03%	0	2,03%	0	2,03%
Oostrum	2.420	12	1,49%	12	1,49%	12	1,49%	11	1,53%	11	1,53%	11	1,53%	10	1,57%	38	1,57%	9	1,61%	9	1,61%	8	1,65%	8	1,65%
Smakt	200	0	2,50%	0	2,50%	0	2,50%	0	2,50%	0	2,50%	0	2,50%	0	3,00%	6	3,00%	0	3,00%	0	3,00%	0	3,00%	0	3,00%
Venray	28.700	187	1,35%	181	1,37%	175	1,39%	175	1,39%	169	1,41%	166	1,42%	165	1,43%	408	1,42%	165	1,43%	156	1,46%	154	1,46%	136	1,53%
Veulen	555	0	3,06%	0	3,06%	0	3,06%	0	3,06%	0	3,24%	0	3,24%	0	3,24%	18	3,24%	0	3,24%	0	3,24%	0	3,24%	0	3,06%
Vredepeel	230	0	5,22%	0	5,22%	0	5,22%	0	5,22%	0	5,22%	0	5,22%	0	5,22%	12	5,22%	0	5,22%	0	5,22%	0	5,22%	0	5,22%
Wanssum	1.875	0	2,93%	0	2,99%	0	2,93%	0	2,99%	0	2,99%	0	3,04%	0	3,04%	56	2,99%	0	2,99%	0	2,99%	0	2,99%	0	2,93%
Ysselsteyn	2.280	4	1,84%	4	1,84%	5	1,80%	3	1,89%	1	1,97%	1	1,97%	0	2,02%	46	2,02%	0	2,02%	0	2,06%	0	2,06%	0	2,02%

Wijken in Venray	inwoners	jan-22		feb-22		mrt-22		apr-22		mei-22		jun-22		jul-22		aug-22		sep-22		okt-22		nov-22		dec-22	
Antoniusveld	1.850	9	1,51%	9	1,51%	9	1,51%	9	1,51%	9	1,51%	8	1,57%	8	1,57%	29	1,57%	8	1,57%	7	1,62%	7	1,62%	6	1,68%
Brabander	2.345	0	2,05%	0	2,17%	0	2,17%	0	2,22%	0	2,26%	0	2,26%	0	2,30%	54	2,30%	0	2,30%	0	2,39%	0	2,35%	0	2,39%
Brukske	4.855	53	0,91%	54	0,89%	53	0,91%	53	0,91%	52	0,93%	52	0,93%	52	0,93%	46	0,95%	50	0,97%	48	1,01%	48	1,01%	47	1,03%
Centrum	2.205	16	1,27%	16	1,27%	16	1,27%	16	1,27%	16	1,27%	16	1,27%	16	1,27%	27	1,22%	17	1,22%	16	1,27%	15	1,32%	13	1,41%
Landweert	6.105	27	1,56%	24	1,61%	21	1,65%	23	1,62%	21	1,65%	18	1,70%	18	1,70%	104	1,70%	19	1,69%	16	1,74%	15	1,75%	11	1,82%
Oost	2.490	15	1,41%	14	1,45%	14	1,45%	14	1,45%	15	1,41%	15	1,41%	15	1,41%	34	1,37%	15	1,41%	14	1,45%	14	1,45%	14	1,45%
Smakterheide	815	4	1,47%	4	1,47%	4	1,47%	4	1,47%	4	1,47%	4	1,47%	4	1,47%	12	1,47%	4	1,47%	4	1,47%	4	1,47%	3	1,60%
Veltum	3.745	29	1,23%	28	1,26%	27	1,28%	26	1,31%	24	1,36%	26	1,31%	26	1,31%	49	1,31%	26	1,31%	28	1,26%	28	1,26%	23	1,39%
Vlakwater	860	0	2,21%	0	2,21%	0	2,21%	0	2,21%	0	2,21%	0	2,33%	0	2,33%	20	2,33%	0	2,44%	0	2,44%	0	2,44%	0	2,44%
West	3.430	37	0,93%	38	0,90%	37	0,93%	37	0,93%	36	0,96%	36	0,96%	36	0,96%	33	0,96%	37	0,93%	36	0,96%	35	0,99%	32	1,08%