



Burgerhulpverleners vs inwoners in 2023

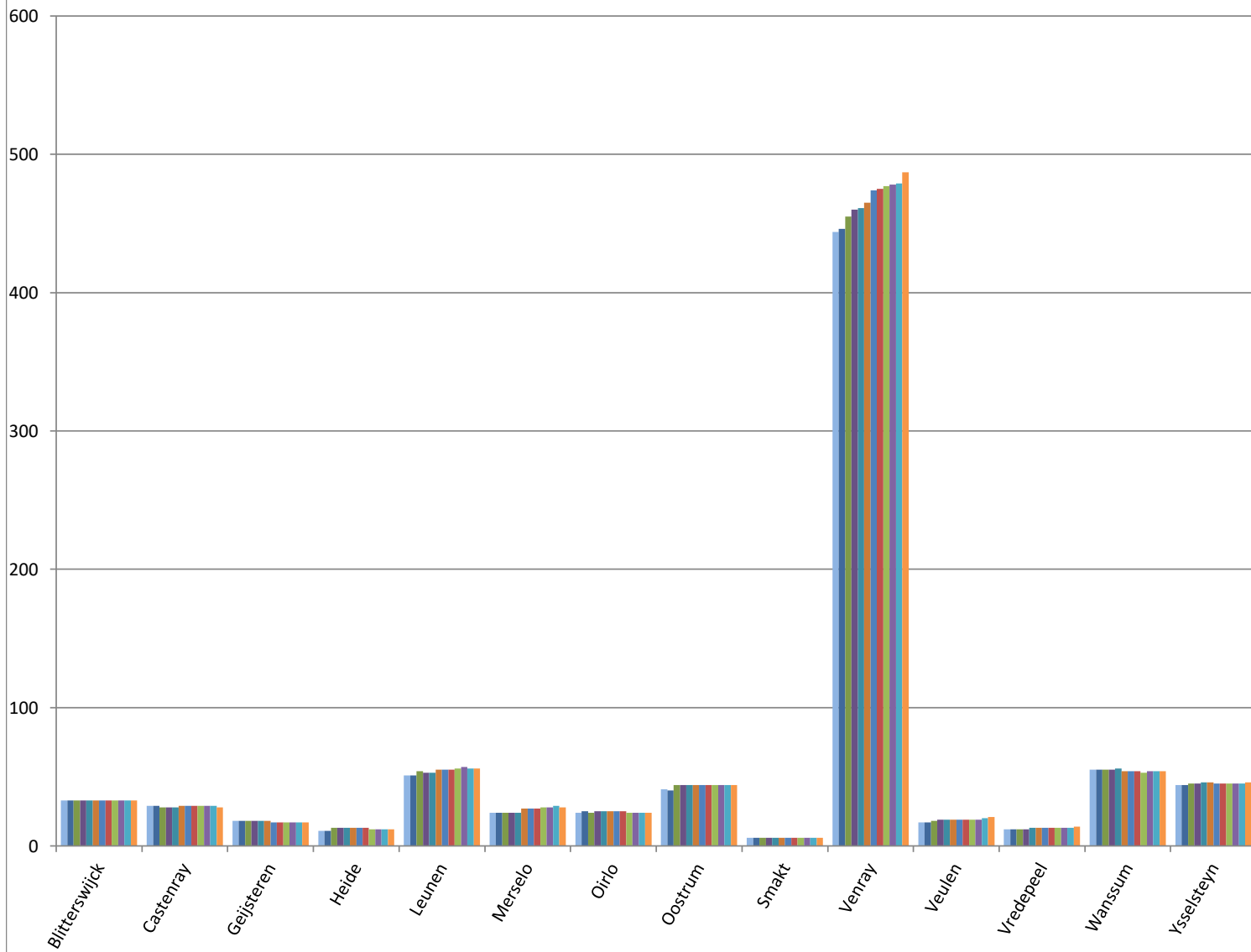
gestegen
gelijk gebleven
gedaald

(Per 1-1-2022)	inwoners	jan-23		feb-23		mrt-23		apr-23		mei-23		jun-23		jul-23		aug-23		sep-23		okt-23		nov-23		dec-23	
Totaal	43.964	809	1,84%	811	1,84%	829	1,89%	835	1,90%	839	1,91%	847	1,93%	854	1,94%	855	1,94%	856	1,95%	859	1,95%	861	1,96%	870	1,98%
Blitterswijk	1.162	33	2,84%	33	2,84%	33	2,84%	33	2,84%	33	2,84%	33	2,84%	33	2,84%	33	2,84%	33	2,84%	33	2,84%	33	2,84%	33	2,84%
Castenray	817	29	3,55%	29	3,55%	28	3,43%	28	3,43%	28	3,43%	29	3,55%	29	3,55%	29	3,55%	29	3,55%	29	3,55%	29	3,55%	28	3,43%
Geijsteren	410	18	4,39%	18	4,39%	18	4,39%	18	4,39%	18	4,39%	18	4,39%	17	4,15%	17	4,15%	17	4,15%	17	4,15%	17	4,15%	17	4,15%
Heide	500	11	2,20%	11	2,20%	13	2,60%	13	2,60%	13	2,60%	13	2,60%	13	2,60%	13	2,60%	12	2,40%	12	2,40%	12	2,40%	12	2,40%
Leunen	2.237	51	2,28%	51	2,28%	54	2,41%	53	2,37%	53	2,37%	55	2,46%	55	2,46%	55	2,46%	56	2,50%	57	2,55%	56	2,50%	56	2,50%
Merselo	1.089	24	2,20%	24	2,20%	24	2,20%	24	2,20%	24	2,20%	27	2,48%	27	2,48%	27	2,48%	28	2,57%	28	2,57%	29	2,66%	28	2,57%
Oirlo	1.225	24	1,96%	25	2,04%	24	1,96%	25	2,04%	25	2,04%	25	2,04%	25	2,04%	25	2,04%	24	1,96%	24	1,96%	24	1,96%	24	1,96%
Oostrum	2.437	41	1,68%	40	1,64%	44	1,81%	44	1,81%	44	1,81%	44	1,81%	44	1,81%	44	1,81%	44	1,81%	44	1,81%	44	1,81%	44	1,81%
Smakt	200	6	3,00%	6	3,00%	6	3,00%	6	3,00%	6	3,00%	6	3,00%	6	3,00%	6	3,00%	6	3,00%	6	3,00%	6	3,00%	6	3,00%
Venray	28.885	444	1,54%	446	1,54%	455	1,58%	460	1,59%	461	1,60%	465	1,61%	474	1,64%	475	1,64%	477	1,65%	478	1,65%	479	1,66%	487	1,69%
Veulen	562	17	3,02%	17	3,02%	18	3,20%	19	3,38%	19	3,38%	19	3,38%	19	3,38%	19	3,38%	19	3,38%	19	3,38%	20	3,56%	21	3,74%
Vredepeel	235	12	5,11%	12	5,11%	12	5,11%	12	5,11%	13	5,53%	13	5,53%	13	5,53%	13	5,53%	13	5,53%	13	5,53%	13	5,53%	14	5,96%
Wanssum	1.890	55	2,91%	55	2,91%	55	2,91%	55	2,91%	56	2,96%	54	2,86%	54	2,86%	54	2,86%	53	2,80%	54	2,86%	54	2,86%	54	2,86%
Ysselsteyn	2.315	44	1,90%	44	1,90%	45	1,94%	45	1,94%	46	1,99%	46	1,99%	45	1,94%	45	1,94%	45	1,94%	45	1,94%	45	1,94%	45	1,94%

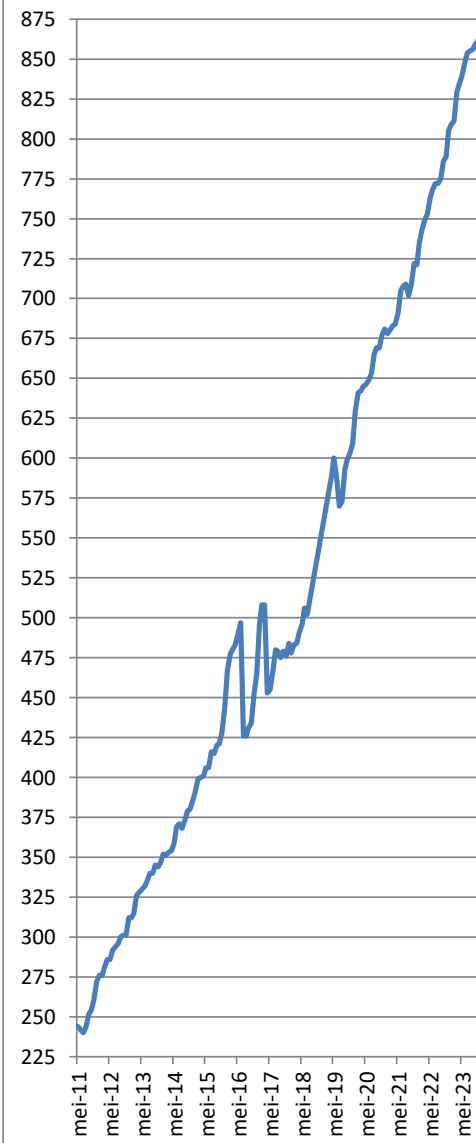
Wijken in Venray	inwoners	jan-23		feb-23		mrt-23		apr-23		mei-23		jun-23		jul-23		aug-23		sep-23		okt-23		nov-23		dec-23	
Antoniusveld	1.840	32	1,74%	32	1,74%	32	1,74%	34	1,85%	34	1,85%	35	1,90%	36	1,96%	37	2,01%	37	2,01%	37	2,01%	38	2,07%	38	2,07%
Brabander	2.445	56	2,29%	57	2,33%	59	2,41%	60	2,45%	62	2,54%	61	2,49%	60	2,45%	60	2,45%	60	2,45%	60	2,45%	59	2,41%	59	2,41%
Brukske	4.830	50	1,04%	50	1,04%	51	1,06%	51	1,06%	51	1,06%	50	1,04%	51	1,06%	51	1,06%	51	1,06%	49	1,01%	51	1,06%	51	1,06%
Centrum	2.235	32	1,43%	31	1,39%	33	1,48%	33	1,48%	33	1,48%	33	1,48%	33	1,48%	33	1,48%	33	1,48%	34	1,52%	34	1,52%	34	1,52%
Landweert	6.105	111	1,82%	112	1,83%	112	1,83%	111	1,82%	110	1,80%	112	1,83%	115	1,88%	115	1,88%	115	1,88%	116	1,90%	118	1,93%	120	1,97%
Oost	2.510	38	1,51%	38	1,51%	39	1,55%	39	1,55%	39	1,55%	38	1,51%	43	1,71%	42	1,67%	41	1,63%	41	1,63%	41	1,63%	42	1,67%
Smakterheide	875	13	1,49%	13	1,49%	14	1,60%	14	1,60%	14	1,60%	14	1,60%	14	1,60%	14	1,60%	14	1,60%	14	1,60%	14	1,60%	14	1,60%
Veltum	3.715	54	1,45%	55	1,48%	56	1,51%	58	1,56%	58	1,56%	61	1,64%	59	1,59%	59	1,59%	60	1,62%	62	1,67%	60	1,62%	61	1,64%
Vlakwater	885	21	2,37%	21	2,37%	23	2,60%	25	2,82%	25	2,82%	25	2,82%	25	2,82%	25	2,82%	26	2,94%	25	2,82%	25	2,82%	28	3,16%
West	3.445	37	1,07%	37	1,07%	36	1,04%	35	1,02%	35	1,02%	36	1,04%	38	1,10%	39	1,13%	40	1,16%	40	1,16%	39	1,13%	40	1,16%

Burgerhulpverleners in 2023

- jan-23 feb-23 mrt-23 apr-23
- mei-23 jun-23 jul-23 aug-23
- sep-23 okt-23 nov-23 dec-23

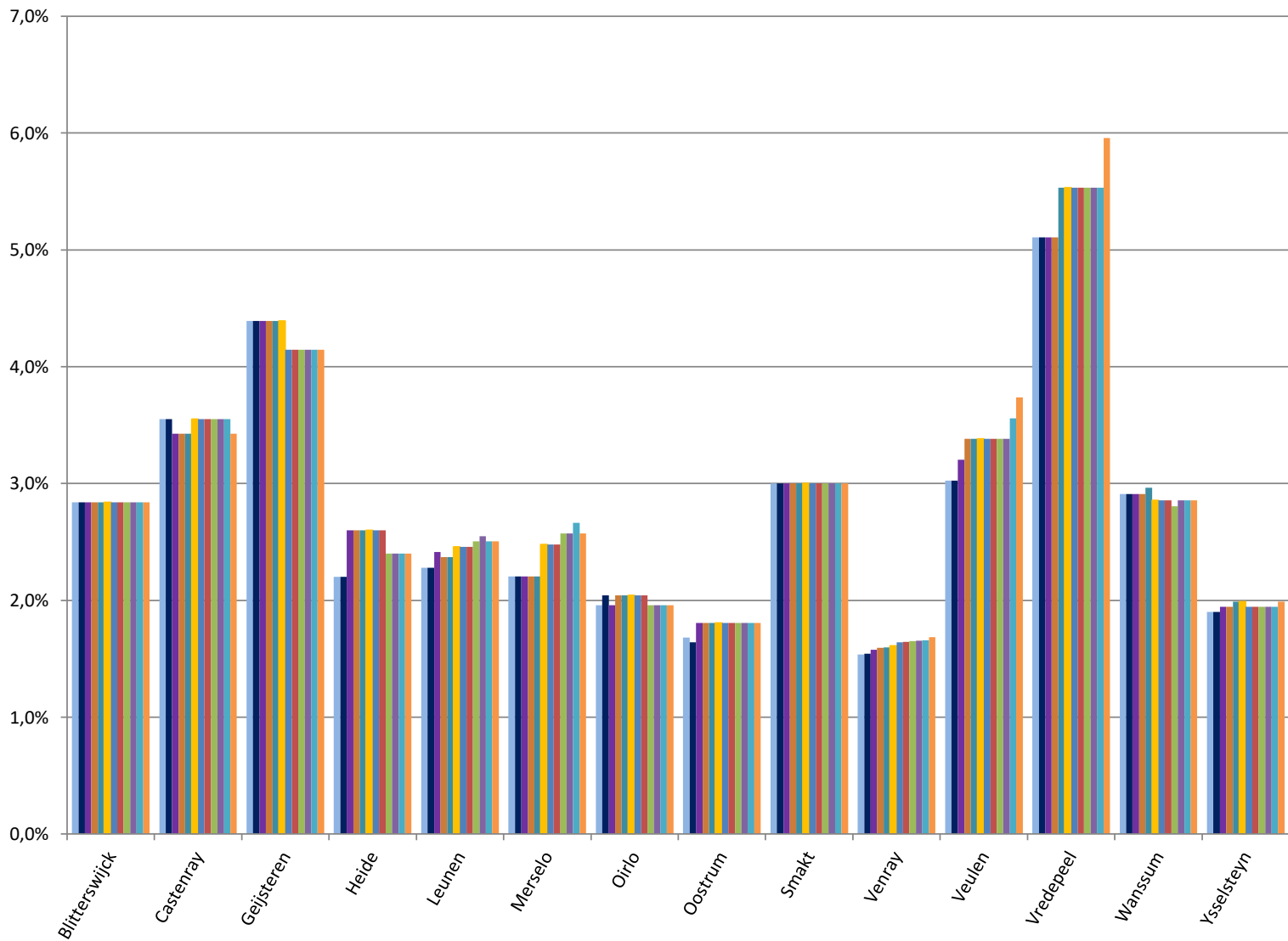


Burgerhulpverleners in de Gemeente Venray

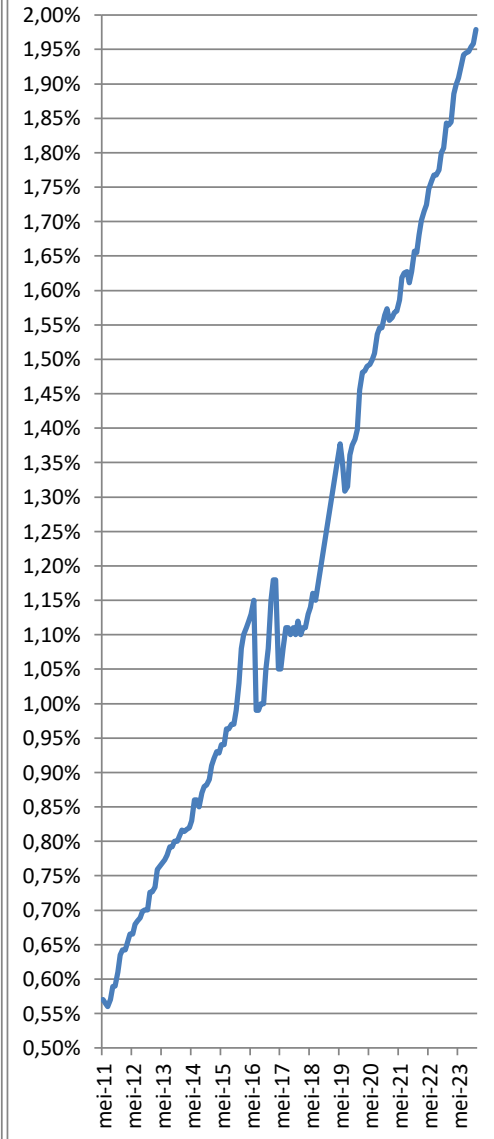


Burgerhulpverleners vs inwoners in 2023

- jan-23 feb-23 mrt-23 apr-23
- mei-23 jun-23 jul-23 aug-23
- sep-23 okt-23 nov-23 dec-23



Burgerhulpverleners vs inwoners in de Gemeente Venray





Benodigde burgerhulpverleners

Target = 2%

(Per 1-1-2019)

	inwoners	jan-23		feb-23		mrt-23		apr-23		mei-23		jun-23		jul-23		aug-23		sep-23		okt-23		nov-23		dec-23	
		Aantal	Totaal	Aantal	Totaal	Aantal	Totaal	Aantal	Totaal	Aantal	Totaal	Aantal	Totaal	Aantal	Totaal	Aantal	Totaal	Aantal	Totaal	Aantal	Totaal	Aantal	Totaal	Aantal	Totaal
Totaal	43.964	71	1,84%	69	1,84%	51	1,89%	45	1,90%	41	1,91%	33	1,93%	26	1,94%	25	1,94%	24	1,95%	21	1,95%	19	1,96%	10	1,98%
Blitterswijk	1.162	0	2,84%	0	2,84%	0	2,84%	0	2,84%	0	2,84%	0	2,84%	0	2,84%	0	2,84%	0	2,84%	0	2,84%	0	2,84%	0	2,84%
Castenray	817	0	3,55%	0	3,55%	0	3,43%	0	3,43%	0	3,43%	0	3,55%	0	3,55%	0	3,55%	0	3,55%	0	3,55%	0	3,55%	0	3,43%
Geijsteren	410	0	4,39%	0	4,39%	0	4,39%	0	4,39%	0	4,39%	0	4,39%	0	4,15%	0	4,15%	0	4,15%	0	4,15%	0	4,15%	0	4,15%
Heide	500	0	2,20%	0	2,20%	0	2,60%	0	2,60%	0	2,60%	0	2,60%	0	2,60%	0	2,60%	0	2,40%	0	2,40%	0	2,40%	0	2,40%
Leunen	2.237	0	2,28%	0	2,28%	0	2,41%	0	2,37%	0	2,37%	0	2,46%	0	2,46%	0	2,46%	0	2,50%	0	2,55%	0	2,50%	0	2,50%
Merselo	1.089	0	2,20%	0	2,20%	0	2,20%	0	2,20%	0	2,20%	0	2,48%	0	2,48%	0	2,48%	0	2,57%	0	2,57%	0	2,66%	0	2,57%
Oirlo	1.225	1	1,96%	0	2,04%	1	1,96%	0	2,04%	0	2,04%	0	2,04%	0	2,04%	0	2,04%	1	1,96%	1	1,96%	1	1,96%	1	1,96%
Oostrum	2.437	8	1,68%	9	1,64%	5	1,81%	5	1,81%	5	1,81%	5	1,81%	5	1,81%	5	1,81%	5	1,81%	5	1,81%	5	1,81%	5	1,81%
Smakt	200	0	3,00%	0	3,00%	0	3,00%	0	3,00%	0	3,00%	0	3,00%	0	3,00%	0	3,00%	0	3,00%	0	3,00%	0	3,00%	0	3,00%
Venray	28.885	134	1,54%	132	1,54%	123	1,58%	118	1,59%	117	1,60%	113	1,61%	104	1,64%	103	1,64%	101	1,65%	100	1,65%	99	1,66%	91	1,69%
Veulen	562	0	3,02%	0	3,02%	0	3,20%	0	3,38%	0	3,38%	0	3,38%	0	3,38%	0	3,38%	0	3,38%	0	3,38%	0	3,56%	0	3,74%
Vredepeel	235	0	5,11%	0	5,11%	0	5,11%	0	5,11%	0	5,53%	0	5,53%	0	5,53%	0	5,53%	0	5,53%	0	5,53%	0	5,53%	0	5,96%
Wanssum	1.890	0	2,91%	0	2,91%	0	2,91%	0	2,91%	0	2,96%	0	2,86%	0	2,86%	0	2,86%	0	2,80%	0	2,86%	0	2,86%	0	2,86%
Ysselsteyn	2.315	3	1,90%	3	1,90%	2	1,94%	2	1,94%	1	1,99%	1	1,99%	2	1,94%	2	1,94%	2	1,94%	2	1,94%	2	1,94%	1	1,99%

Wijken in Venray	inwoners	jan-23		feb-23		mrt-23		apr-23		mei-23		jun-23		jul-23		aug-23		sep-23		okt-23		nov-23		dec-23	
Antoniusveld	1.840	5	1,74%	5	1,74%	5	1,74%	3	1,85%	3	1,85%	2	1,90%	1	1,96%	0	2,01%	0	2,01%	0	2,01%	0	2,07%	0	2,07%
Brabander	2.445	0	2,29%	0	2,33%	0	2,41%	0	2,45%	0	2,54%	0	2,49%	0	2,45%	0	2,45%	0	2,45%	0	2,45%	0	2,41%	0	2,41%
Brukske	4.830	47	1,04%	47	1,04%	46	1,06%	46	1,06%	46	1,06%	47	1,04%	46	1,06%	46	1,06%	46	1,06%	48	1,01%	46	1,06%	46	1,06%
Centrum	2.235	13	1,43%	14	1,39%	12	1,48%	12	1,48%	12	1,48%	12	1,48%	12	1,48%	12	1,48%	12	1,48%	11	1,52%	11	1,52%	11	1,52%
Landweert	6.105	12	1,82%	11	1,83%	11	1,83%	12	1,82%	13	1,80%	11	1,83%	8	1,88%	8	1,88%	8	1,88%	7	1,90%	5	1,93%	3	1,97%
Oost	2.510	13	1,51%	13	1,51%	12	1,55%	12	1,55%	12	1,55%	13	1,51%	8	1,71%	9	1,67%	10	1,63%	10	1,63%	10	1,63%	9	1,67%
Smakterheide	875	5	1,49%	5	1,49%	4	1,60%	4	1,60%	4	1,60%	4	1,60%	4	1,60%	4	1,60%	4	1,60%	4	1,60%	4	1,60%	4	1,60%
Veltum	3.715	21	1,45%	20	1,48%	19	1,51%	17	1,56%	17	1,56%	14	1,64%	16	1,59%	16	1,59%	15	1,62%	13	1,67%	15	1,62%	14	1,64%
Vlakwater	885	0	2,37%	0	2,37%	0	2,60%	0	2,82%	0	2,82%	0	2,82%	0	2,82%	0	2,82%	0	2,94%	0	2,82%	0	2,82%	0	3,16%
West	3.445	32	1,07%	32	1,07%	33	1,04%	34	1,02%	34	1,02%	33	1,04%	31	1,10%	30	1,13%	29	1,16%	29	1,16%	30	1,13%	29	1,16%