



Burgerhulpverleners vs inwoners in 2012

gestegen

gelijk gebleven

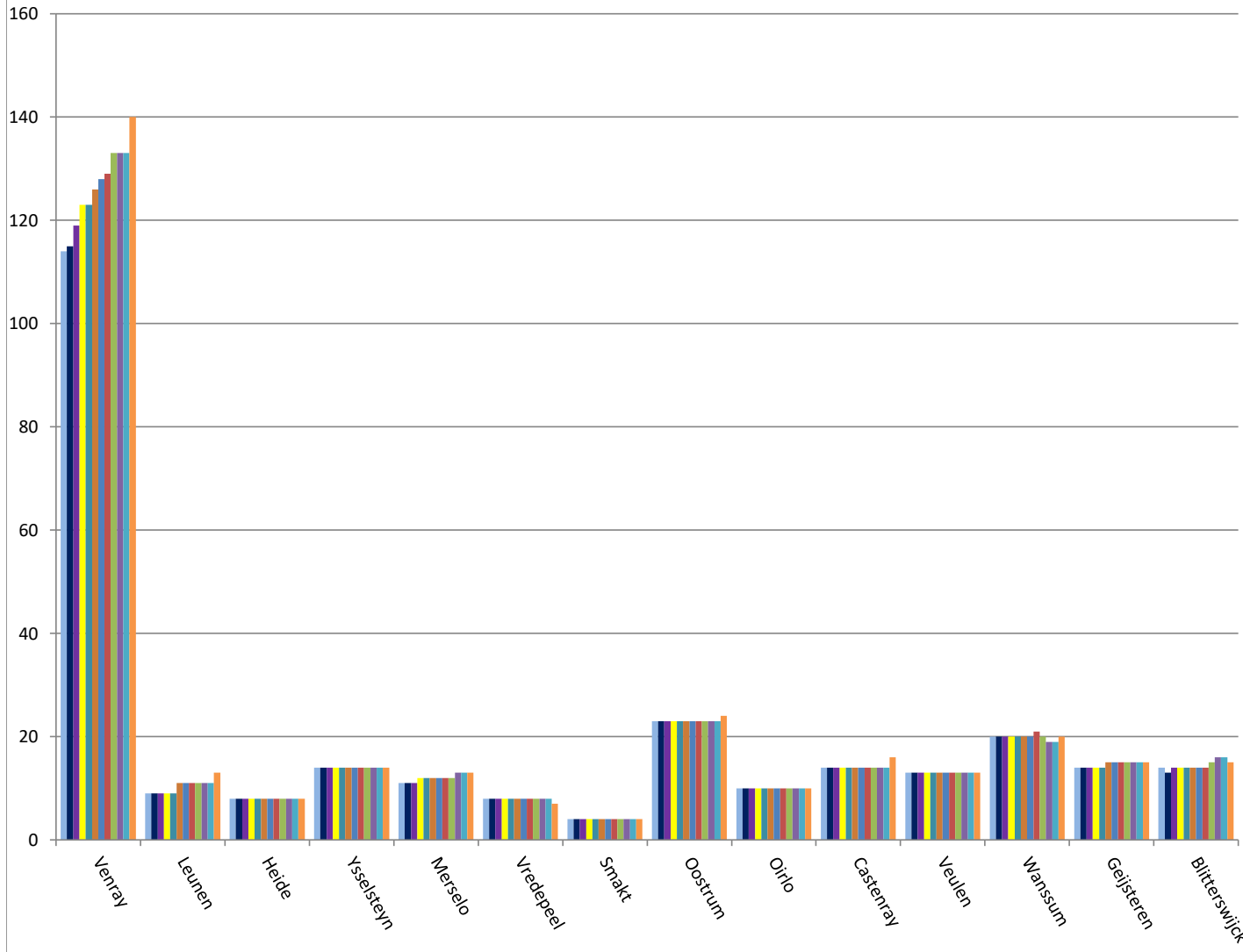
gedaald

	inwoners	jan-12	feb-12	mrt-12	apr-12	mei-12	jun-12	jul-12	aug-12	sep-12	okt-12	nov-12	dec-12
Totaal	42.979	276 0,64%	276 0,64%	281 0,65%	286 0,67%	286 0,67%	292 0,68%	294 0,68%	296 0,69%	300 0,70%	301 0,70%	301 0,70%	312 0,73%
Venray	28.217	114 0,40%	115 0,41%	119 0,42%	123 0,44%	123 0,44%	126 0,45%	128 0,45%	129 0,46%	133 0,47%	133 0,47%	133 0,47%	140 0,50%
Leunen	2.276	9 0,40%	9 0,40%	9 0,40%	9 0,40%	9 0,40%	11 0,48%	11 0,48%	11 0,48%	11 0,48%	11 0,48%	11 0,48%	13 0,57%
Heide	471	8 1,70%	8 1,70%	8 1,70%	8 1,70%	8 1,70%	8 1,70%	8 1,70%	8 1,70%	8 1,70%	8 1,70%	8 1,70%	8 1,70%
Ysselsteyn	2.205	14 0,63%	14 0,63%	14 0,63%	14 0,63%	14 0,63%	14 0,63%	14 0,63%	14 0,63%	14 0,63%	14 0,63%	14 0,63%	14 0,63%
Merselo	1.094	11 1,01%	11 1,01%	11 1,01%	12 1,10%	12 1,10%	12 1,10%	12 1,10%	12 1,10%	12 1,10%	13 1,19%	13 1,19%	13 1,19%
Vredepeel	236	8 3,39%	8 3,39%	8 3,39%	8 3,39%	8 3,39%	8 3,39%	8 3,39%	8 3,39%	8 3,39%	8 3,39%	8 3,39%	7 2,97%
Smakt	211	4 1,90%	4 1,90%	4 1,90%	4 1,90%	4 1,90%	4 1,90%	4 1,90%	4 1,90%	4 1,90%	4 1,90%	4 1,90%	4 1,90%
Oostrum	2.297	23 1,00%	23 1,00%	23 1,00%	23 1,00%	23 1,00%	23 1,00%	23 1,00%	23 1,00%	23 1,00%	23 1,00%	23 1,00%	24 1,04%
Oirlo	1.208	10 0,83%	10 0,83%	10 0,83%	10 0,83%	10 0,83%	10 0,83%	10 0,83%	10 0,83%	10 0,83%	10 0,83%	10 0,83%	10 0,83%
Castenray	783	14 1,79%	14 1,79%	14 1,79%	14 1,79%	14 1,79%	14 1,79%	14 1,79%	14 1,79%	14 1,79%	14 1,79%	14 1,79%	16 2,04%
Veulen	537	13 2,42%	13 2,42%	13 2,42%	13 2,42%	13 2,42%	13 2,42%	13 2,42%	13 2,42%	13 2,42%	13 2,42%	13 2,42%	13 2,42%
Wanssum	1.958	20 1,02%	20 1,02%	20 1,02%	20 1,02%	20 1,02%	20 1,02%	20 1,02%	21 1,07%	20 1,02%	19 0,97%	19 0,97%	20 1,02%
Geijsteren	436	14 3,21%	14 3,21%	14 3,21%	14 3,21%	14 3,21%	14 3,21%	15 3,44%	15 3,44%	15 3,44%	15 3,44%	15 3,44%	15 3,44%
Blitterswijk	1.050	14 1,33%	13 1,24%	14 1,33%	14 1,33%	14 1,33%	14 1,33%	14 1,33%	14 1,33%	15 1,43%	16 1,52%	16 1,52%	15 1,43%

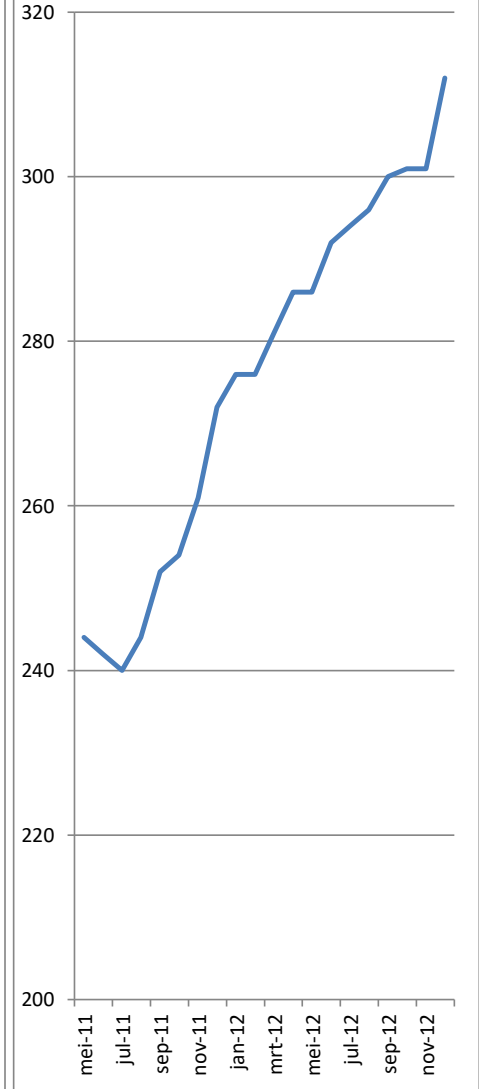
Venray																									
Centrum	1880	9 0,48%	9 0,48%	9 0,48%	10 0,53%	10 0,53%	10 0,53%	10 0,53%	10 0,53%	10 0,53%	10 0,53%	10 0,53%	10 0,53%												
Oost	2564	14 0,55%	14 0,55%	14 0,55%	14 0,55%	14 0,55%	14 0,55%	14 0,55%	14 0,55%	14 0,55%	14 0,55%	14 0,55%	15 0,59%												
West	3641	8 0,22%	9 0,25%	9 0,25%	10 0,27%	10 0,27%	11 0,30%	12 0,33%	12 0,33%	12 0,33%	12 0,33%	12 0,33%	14 0,38%												
Vlakwater	829	7 0,84%	7 0,84%	7 0,84%	7 0,84%	7 0,84%	7 0,84%	7 0,84%	7 0,84%	7 0,84%	7 0,84%	7 0,84%	8 0,97%												
Veltum	3702	15 0,41%	15 0,41%	16 0,43%	17 0,46%	17 0,46%	17 0,46%	17 0,46%	17 0,46%	18 0,49%	18 0,49%	18 0,49%	18 0,49%												
Brukske	5024	8 0,16%	8 0,16%	8 0,16%	8 0,16%	8 0,16%	9 0,18%	10 0,20%	10 0,20%	12 0,24%	12 0,24%	12 0,24%	12 0,24%												
Landweert	6422	35 0,55%	35 0,55%	38 0,59%	38 0,59%	38 0,59%	38 0,59%	38 0,59%	38 0,59%	38 0,59%	38 0,59%	38 0,59%	41 0,64%												
Smakterheide	805	5 0,62%	5 0,62%	5 0,62%	5 0,62%	5 0,62%	6 0,75%	6 0,75%	6 0,75%	6 0,75%	6 0,75%	6 0,75%	6 0,75%												
Brabander	1326	6 0,45%	6 0,45%	6 0,45%	6 0,45%	6 0,45%	6 0,45%	6 0,45%	7 0,53%	7 0,53%	7 0,53%	7 0,53%	7 0,53%												
Anthoniusveld	2024	7 0,35%	7 0,35%	7 0,35%	8 0,40%	8 0,40%	8 0,40%	8 0,40%	8 0,40%	9 0,44%	9 0,44%	9 0,44%	9 0,44%												

Burgerhulpverleners in 2012

- jan-12 feb-12 mrt-12
- apr-12 mei-12 jun-12
- jul-12 aug-12 sep-12
- okt-12 nov-12 dec-12

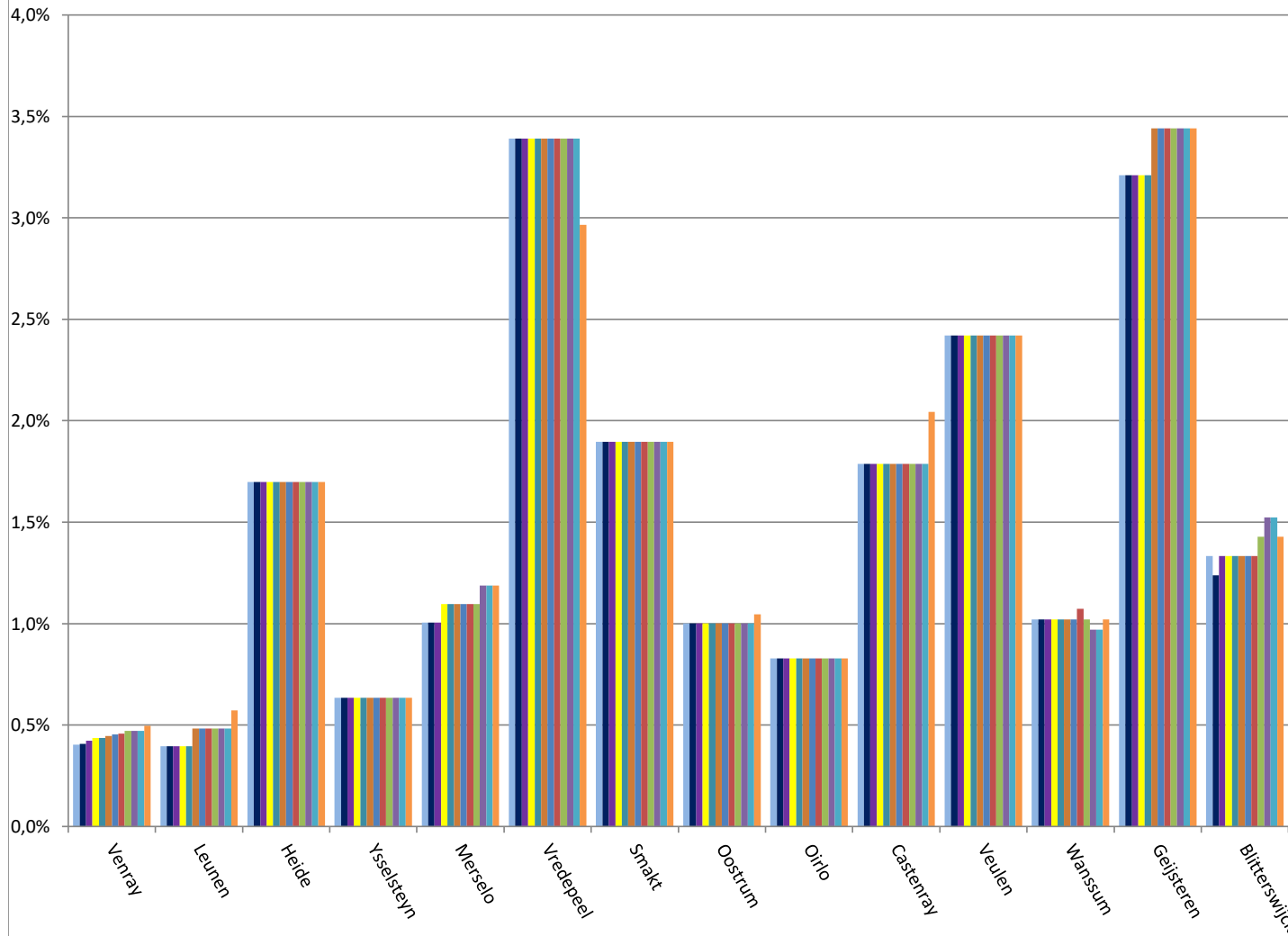


Burgerhulpverleners in de Gemeente Venray



Burgerhulpverleners vs inwoners in 2012

- jan-12
- feb-12
- mrt-12
- apr-12
- mei-12
- jun-12
- jul-12
- aug-12
- sep-12
- okt-12
- nov-12
- Dec-12



Burgerhulpverleners vs inwoners in de Gemeente Venray

