



Burgerhulpverleners vs inwoners in 2016

gestegen

gelijk gebleven

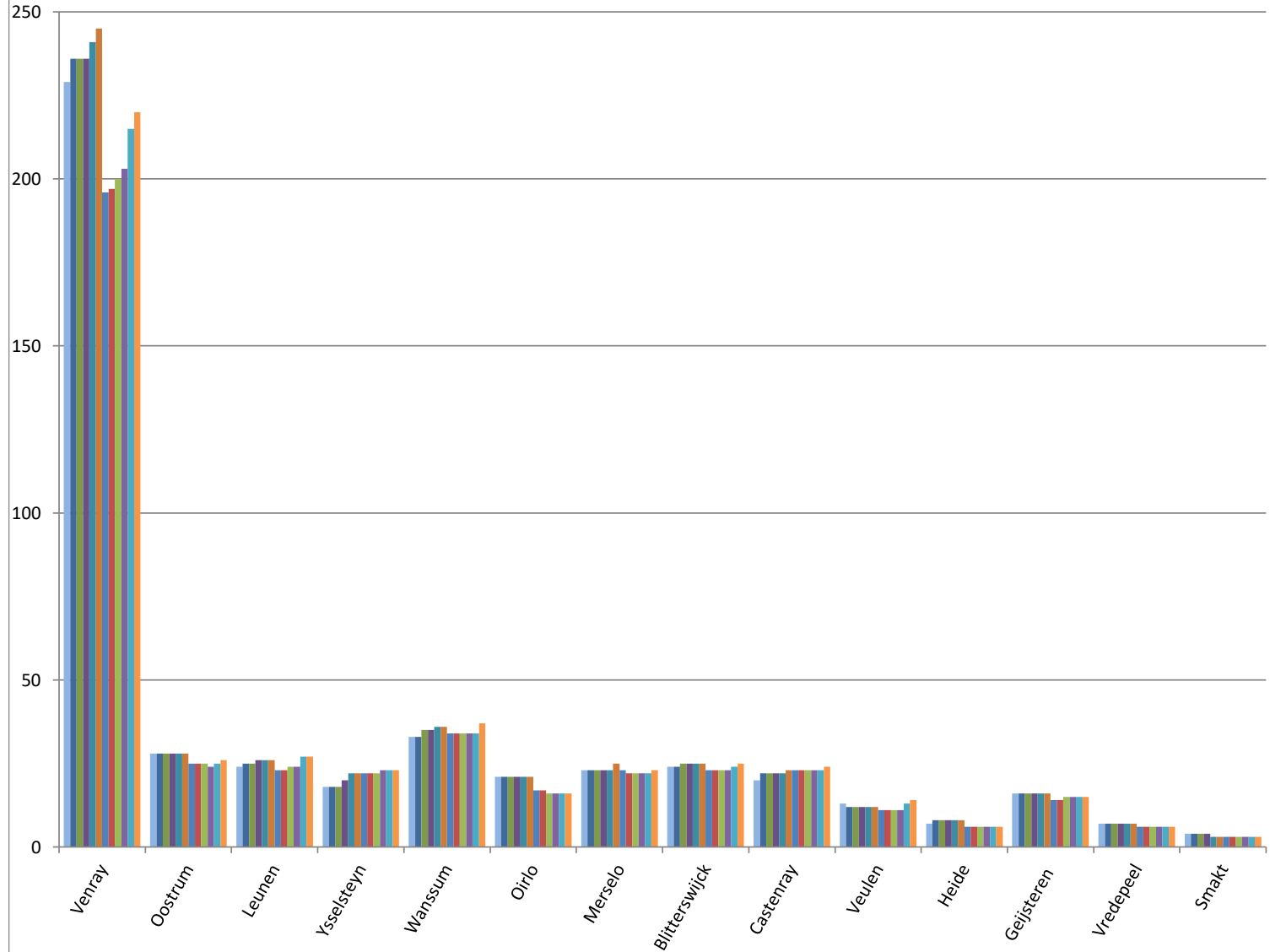
gedaald

(Per 1-1-2016)	inwoners	jan-16		feb-16		mrt-16		apr-16		mei-16		jun-16		jul-16		aug-16		sep-16		okt-16		nov-16		dec-16	
Totaal	43.205	467	1,08%	477	1,10%	480	1,11%	483	1,12%	490	1,13%	497	1,15%	426	0,99%	426	0,99%	430	1,00%	433	1,00%	452	1,05%	465	1,08%
Venray	28.350	229	0,81%	236	0,83%	236	0,83%	236	0,83%	241	0,85%	245	0,86%	196	0,69%	197	0,69%	200	0,71%	203	0,72%	215	0,76%	220	0,78%
Oostrum	2.305	28	1,21%	28	1,21%	28	1,21%	28	1,21%	28	1,21%	28	1,21%	25	1,08%	25	1,08%	25	1,08%	24	1,04%	25	1,08%	26	1,13%
Leunen	2.260	24	1,06%	25	1,11%	25	1,11%	26	1,15%	26	1,15%	26	1,15%	23	1,02%	23	1,02%	24	1,06%	24	1,06%	27	1,19%	27	1,19%
Ysselsteyn	2.255	18	0,80%	18	0,80%	18	0,80%	20	0,89%	22	0,98%	22	0,98%	22	0,98%	22	0,98%	22	0,98%	23	1,02%	23	1,02%	23	1,02%
Wanssum	1.935	33	1,71%	33	1,71%	35	1,81%	35	1,81%	36	1,86%	36	1,86%	34	1,76%	34	1,76%	34	1,76%	34	1,76%	34	1,76%	37	1,91%
Oirlo	1.220	21	1,72%	21	1,72%	21	1,72%	21	1,72%	21	1,72%	21	1,72%	17	1,39%	17	1,39%	16	1,31%	16	1,31%	16	1,31%	16	1,31%
Merselo	1.115	23	2,06%	23	2,06%	23	2,06%	23	2,06%	23	2,06%	25	2,24%	23	2,06%	22	1,97%	22	1,97%	22	1,97%	22	1,97%	23	2,06%
Blitterswijck	1.105	24	2,17%	24	2,17%	25	2,26%	25	2,26%	25	2,26%	25	2,26%	23	2,08%	23	2,08%	23	2,08%	23	2,08%	24	2,17%	25	2,26%
Castenray	775	20	2,58%	22	2,84%	22	2,84%	22	2,84%	22	2,84%	23	2,97%	23	2,97%	23	2,97%	23	2,97%	23	2,97%	23	2,97%	24	3,10%
Veulen	555	13	2,34%	12	2,16%	12	2,16%	12	2,16%	12	2,16%	12	2,16%	11	1,98%	11	1,98%	11	1,98%	11	1,98%	13	2,34%	14	2,52%
Heide	460	7	1,52%	8	1,74%	8	1,74%	8	1,74%	8	1,74%	8	1,74%	6	1,30%	6	1,30%	6	1,30%	6	1,30%	6	1,30%	6	1,30%
Geijsteren	435	16	3,68%	16	3,68%	16	3,68%	16	3,68%	16	3,68%	16	3,68%	14	3,22%	14	3,22%	15	3,45%	15	3,45%	15	3,45%	15	3,45%
Vredepeel	225	7	3,11%	7	3,11%	7	3,11%	7	3,11%	7	3,11%	7	3,11%	6	2,67%	6	2,67%	6	2,67%	6	2,67%	6	2,67%	6	2,67%
Smakt	210	4	1,90%	4	1,90%	4	1,90%	4	1,90%	3	1,43%	3	1,43%	3	1,43%	3	1,43%	3	1,43%	3	1,43%	3	1,43%	3	1,43%

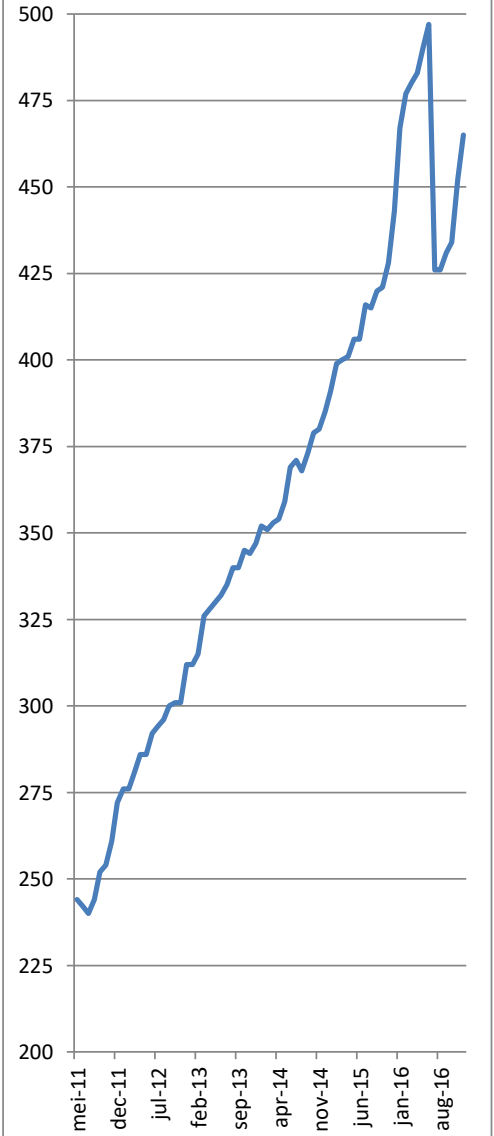
Wijken in Venray	inwoners	jan-16		feb-16		mrt-16		apr-16		mei-16		jun-16		jul-16		aug-16		sep-16		okt-16		nov-16		dec-16	
Landweert	6.332	66	1,04%	69	1,09%	69	1,09%	69	1,09%	67	1,06%	68	1,07%	58	0,92%	59	0,93%	59	0,93%	61	0,96%	64	1,01%	65	1,03%
Brukske	4.964	25	0,50%	26	0,52%	26	0,52%	26	0,52%	26	0,52%	27	0,54%	23	0,46%	23	0,46%	23	0,46%	23	0,46%	24	0,48%	25	0,50%
Veltum	3.777	32	0,85%	34	0,90%	34	0,90%	34	0,90%	35	0,93%	35	0,93%	28	0,74%	28	0,74%	28	0,74%	29	0,77%	32	0,85%	32	0,85%
West	3.521	25	0,71%	24	0,68%	24	0,68%	24	0,68%	25	0,71%	27	0,77%	23	0,65%	23	0,65%	24	0,68%	24	0,68%	25	0,71%	25	0,71%
Oost	2.515	24	0,95%	24	0,95%	22	0,87%	22	0,87%	24	0,95%	24	0,95%	15	0,60%	14	0,56%	14	0,56%	15	0,60%	16	0,64%	17	0,68%
Centrum	2.004	12	0,60%	14	0,70%	18	0,90%	18	0,90%	16	0,80%	15	0,75%	9	0,45%	9	0,45%	9	0,45%	9	0,45%	10	0,50%	10	0,50%
Antoniusveld	1.926	13	0,68%	13	0,68%	13	0,68%	13	0,68%	13	0,68%	13	0,68%	8	0,42%	9	0,47%	11	0,57%	11	0,57%	12	0,62%	12	0,62%
Brabander	1.721	17	0,99%	17	0,99%	16	0,93%	16	0,93%	17	0,99%	18	1,05%	18	1,05%	18	1,05%	18	1,05%	18	1,05%	19	1,10%	21	1,22%
Vlakwater	829	9	1,09%	9	1,09%	8	0,96%	8	0,96%	8	0,96%	8	0,96%	8	0,96%	8	0,96%	8	0,96%	8	0,96%	8	0,96%	8	0,96%
Smakterheide	760	6	0,79%	6	0,79%	6	0,79%	6	0,79%	10	1,32%	10	1,32%	6	0,79%	6	0,79%	6	0,79%	5	0,66%	5	0,66%	5	0,66%

Burgerhulpverleners in 2016

- jan-16 feb-16 mrt-16 apr-16
- mei-16 jun-16 jul-16 aug-16
- sep-16 okt-16 nov-16 dec-16

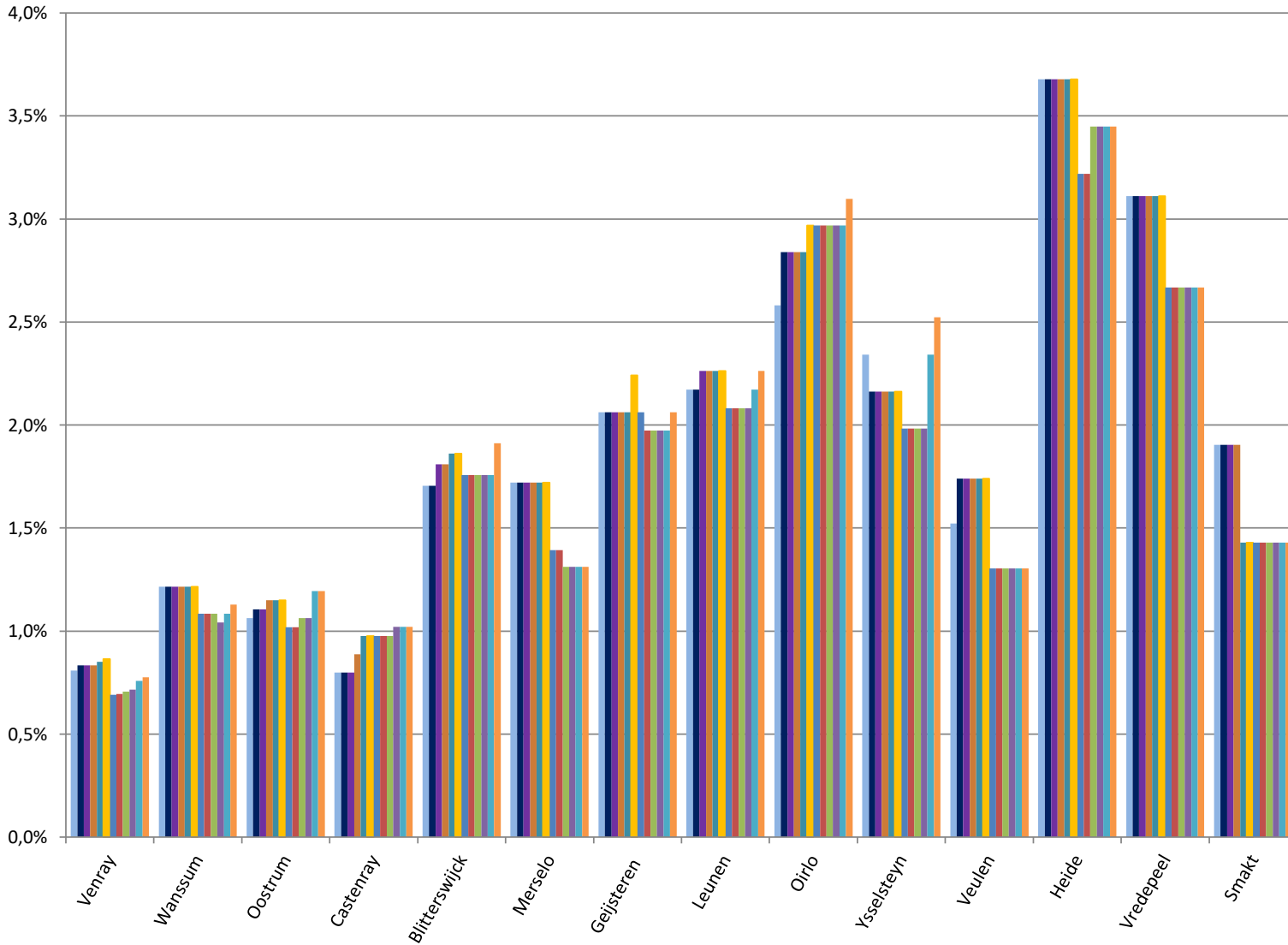


Burgerhulpverleners in de Gemeente Venray



Burgerhulpverleners vs inwoners in 2016

- jan-16
- feb-16
- mrt-16
- apr-16
- mei-16
- jun-16
- jul-16
- aug-16
- sep-16
- okt-16
- nov-16
- dec-16



Burgerhulpverleners vs inwoners in de Gemeente Venray

