



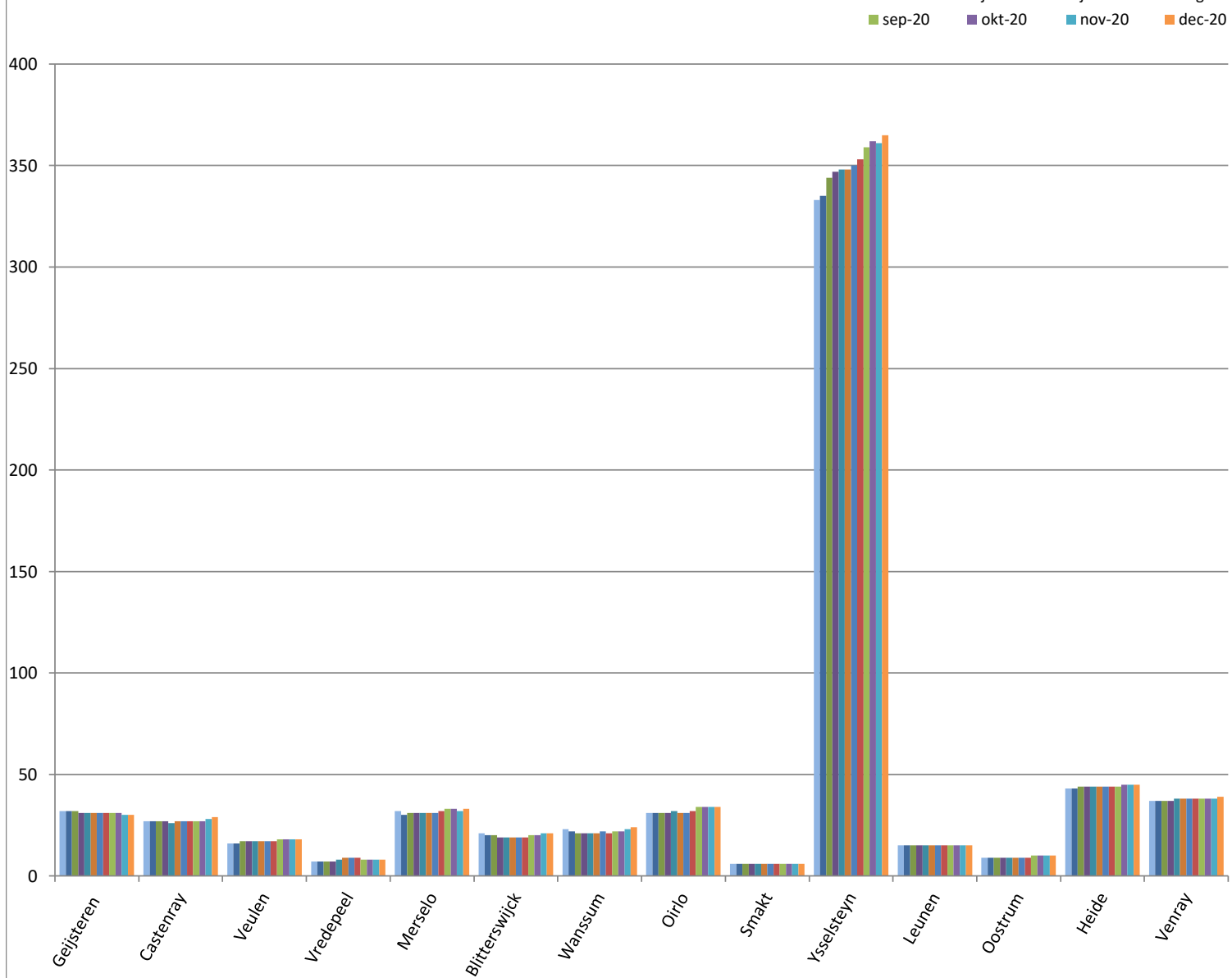
Burgerhulpverleners vs inwoners in 2020

gestegen
gelijk gebleven
gedaald

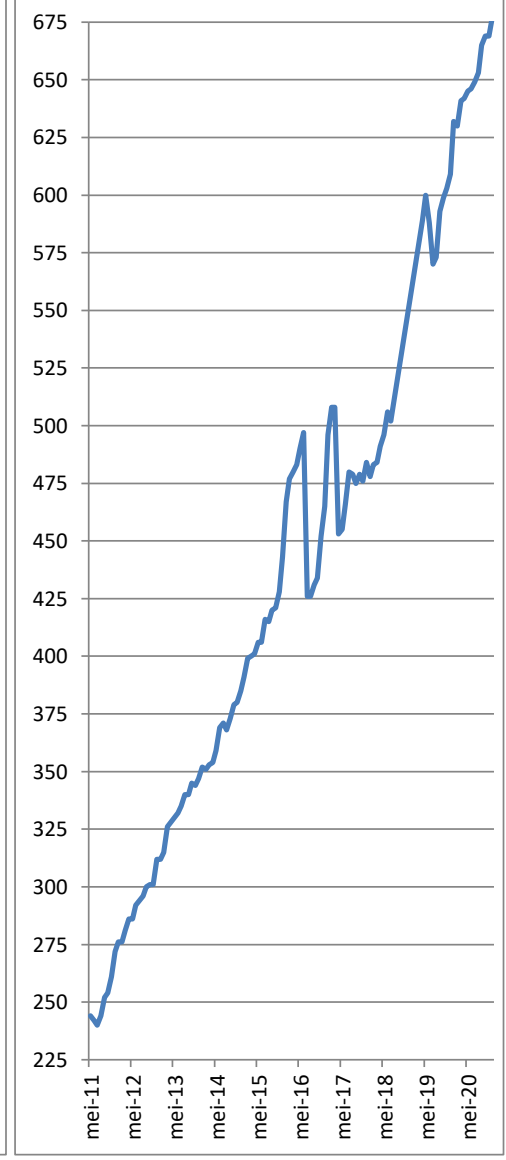
(Per 1-1-2019)	inwoners	jan-20		feb-20		mrt-20		apr-20		mei-20		jun-20		jul-20		aug-20		sep-20		okt-20		nov-20		dec-20	
Totaal	43.285	632	1,46%	630	1,46%	641	1,48%	642	1,48%	645	1,49%	646	1,49%	649	1,50%	653	1,51%	665	1,54%	669	1,55%	669	1,55%	677	1,56%
Blitterswijk	1.060	32	3,02%	32	3,02%	32	3,02%	31	2,92%	31	2,92%	31	2,92%	31	2,92%	31	2,92%	31	2,92%	31	2,92%	30	2,83%	30	2,83%
Castenray	815	27	3,31%	27	3,31%	27	3,31%	27	3,31%	26	3,19%	27	3,31%	27	3,31%	27	3,31%	27	3,31%	27	3,31%	28	3,44%	29	3,56%
Geijsteren	410	16	3,90%	16	3,90%	17	4,15%	17	4,15%	17	4,15%	17	4,15%	17	4,15%	17	4,15%	18	4,39%	18	4,39%	18	4,39%	18	4,39%
Heide	480	7	1,46%	7	1,46%	7	1,46%	7	1,46%	8	1,67%	9	1,88%	9	1,88%	9	1,88%	8	1,67%	8	1,67%	8	1,67%	8	1,67%
Leunen	2.275	32	1,41%	30	1,32%	31	1,36%	31	1,36%	31	1,36%	31	1,36%	31	1,36%	32	1,41%	33	1,45%	33	1,45%	32	1,41%	33	1,45%
Merselo	1.065	21	1,97%	20	1,88%	20	1,88%	19	1,78%	19	1,78%	19	1,78%	19	1,78%	19	1,78%	20	1,88%	20	1,88%	21	1,97%	21	1,97%
Oirlo	1.185	23	1,94%	22	1,86%	21	1,77%	21	1,77%	21	1,77%	21	1,77%	22	1,86%	21	1,77%	22	1,86%	22	1,86%	22	1,86%	23	1,94%
Oostrum	2.340	31	1,32%	31	1,32%	31	1,32%	31	1,32%	32	1,37%	31	1,32%	31	1,32%	32	1,37%	34	1,45%	34	1,45%	34	1,45%	34	1,45%
Smakt	215	6	2,79%	6	2,79%	6	2,79%	6	2,79%	6	2,79%	6	2,79%	6	2,79%	6	2,79%	6	2,79%	6	2,79%	6	2,79%	6	2,79%
Venray	28.535	333	1,17%	335	1,17%	344	1,21%	347	1,22%	348	1,22%	348	1,22%	350	1,23%	353	1,24%	359	1,26%	362	1,27%	361	1,27%	365	1,28%
Veulen	550	15	2,73%	15	2,73%	15	2,73%	15	2,73%	15	2,73%	15	2,73%	15	2,73%	15	2,73%	15	2,73%	15	2,73%	15	2,73%	15	2,73%
Vredepeel	230	9	3,91%	9	3,91%	9	3,91%	9	3,91%	9	3,91%	9	3,91%	9	3,91%	9	3,91%	10	4,35%	10	4,35%	10	4,35%	10	4,35%
Wanssum	1.885	43	2,28%	43	2,28%	44	2,33%	44	2,33%	44	2,33%	44	2,33%	44	2,33%	44	2,33%	44	2,33%	44	2,33%	45	2,39%	45	2,39%
Ysselsteyn	2.240	37	1,65%	37	1,65%	37	1,65%	37	1,65%	38	1,70%	38	1,70%	38	1,70%	38	1,70%	38	1,70%	38	1,70%	38	1,70%	39	1,74%

Wijken in Venray	inwoners	jan-20		feb-20		mrt-20		apr-20		mei-20		jun-20		jul-20		aug-20		sep-20		okt-20		nov-20		dec-20	
Antoniusveld	1.830	23	1,26%	23	1,26%	21	1,15%	19	1,04%	21	1,15%	22	1,20%	22	1,20%	22	1,20%	22	1,20%	23	1,26%	22	1,20%	22	1,20%
Brabander	2.085	23	1,10%	23	1,10%	23	1,10%	25	1,20%	26	1,25%	27	1,29%	27	1,29%	27	1,29%	29	1,39%	29	1,39%	28	1,34%	28	1,34%
Brukske	4.870	35	0,72%	38	0,78%	40	0,82%	40	0,82%	40	0,82%	40	0,82%	40	0,82%	38	0,78%	39	0,80%	39	0,80%	38	0,78%	40	0,82%
Centrum	2.185	27	1,24%	27	1,24%	29	1,33%	29	1,33%	29	1,33%	29	1,33%	29	1,33%	29	1,33%	29	1,33%	30	1,37%	31	1,42%	32	1,46%
Landweert	6.250	80	1,28%	77	1,23%	79	1,26%	79	1,26%	77	1,23%	79	1,26%	79	1,26%	79	1,26%	81	1,30%	82	1,31%	82	1,31%	83	1,33%
Oost	2.355	35	1,49%	36	1,53%	37	1,57%	38	1,61%	38	1,61%	36	1,53%	36	1,53%	36	1,53%	37	1,57%	37	1,57%	38	1,61%	38	1,61%
Smakterheide	820	16	1,95%	15	1,83%	15	1,83%	15	1,83%	16	1,95%	16	1,95%	17	2,07%	20	2,44%	20	2,44%	20	2,44%	19	2,32%	19	2,32%
Veltum	3.855	46	1,19%	47	1,22%	48	1,25%	49	1,27%	49	1,27%	46	1,19%	47	1,22%	47	1,22%	46	1,19%	46	1,19%	48	1,25%	48	1,25%
Vlakwater	840	14	1,67%	14	1,67%	16	1,90%	17	2,02%	17	2,02%	18	2,14%	19	2,26%	21	2,50%	22	2,62%	22	2,62%	22	2,62%	22	2,62%
West	3.445	34	0,99%	35	1,02%	36	1,04%	36	1,04%	35	1,02%	35	1,02%	34	0,99%	34	0,99%	34	0,99%	34	0,99%	33	0,96%	33	0,96%

Burgerhulpverleners in 2020

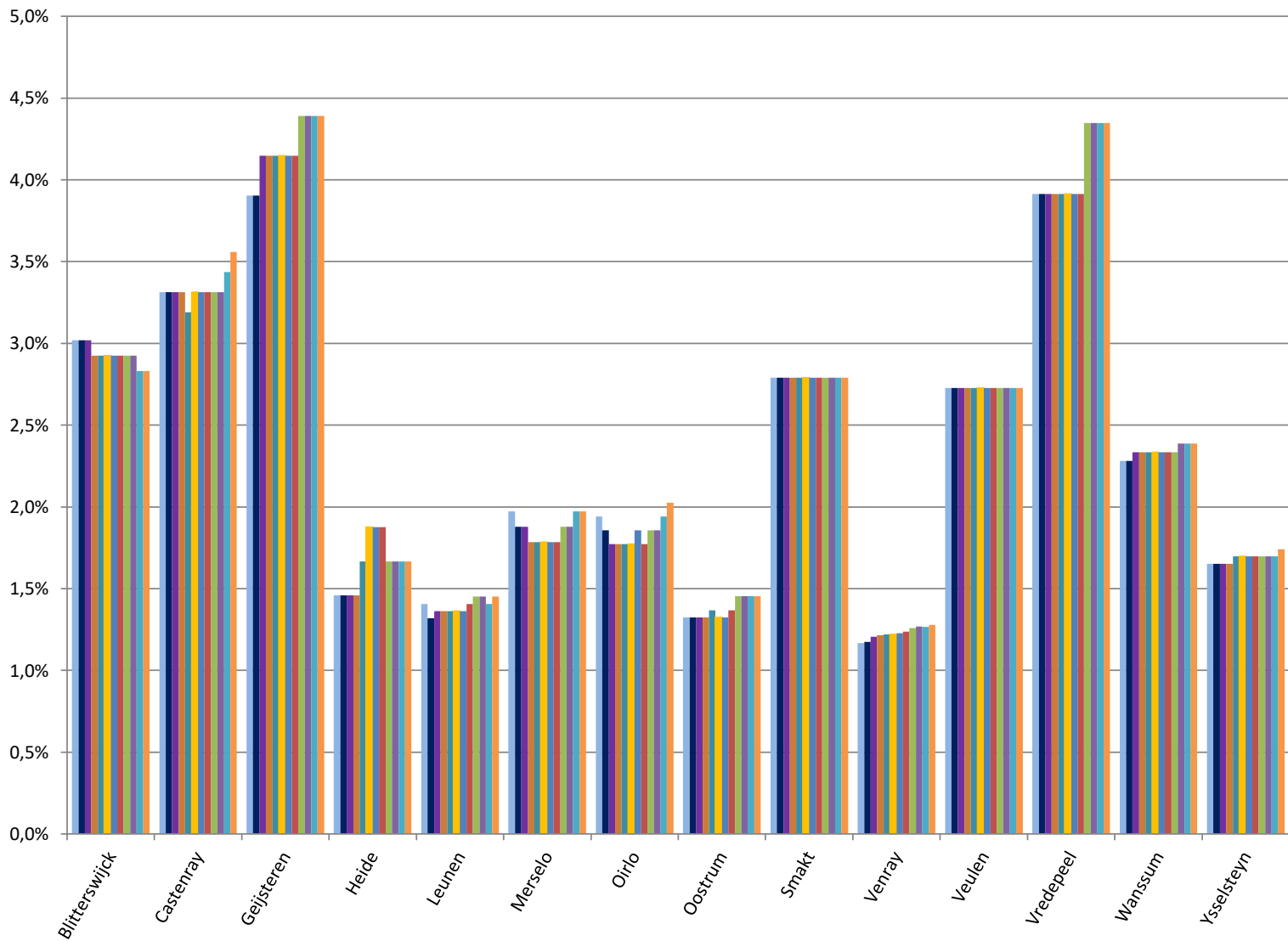


Burgerhulpverleners in de Gemeente Venray



Burgerhulpverleners vs inwoners in 2020

- jan-20
- feb-20
- mrt-20
- apr-20
- mei-20
- jun-20
- jul-20
- aug-20
- sep-20
- okt-20
- nov-20
- dec-20



Burgerhulpverleners vs inwoners in de Gemeente Venray

